

**June 7th, 2014**

## **Issue 8**

Produced & Printed by



# **THE DRYBLOWER**

**Cue's only Dedicated News Resource**  
**on what's happening in and around Cue**

## **Inside this Issue:**

From the Editor's Desk	P.3
Cue Fun Day	P.4
President's Report	P.7
C.E.O. Report	P.8
The Humble Lemon	P.16
Recipe	P.17
Public Notice	P.18
Trivia for June	P.19
Cue Rainfall	P.20
Poet's Corner	P.21
Live & Laugh	P.22
Kid's Page	P.23
Sandfire/Meekatharra Golf Day	P.24
Gardening Tips	P.27
In and Around Cue	P.29
Letters to the Editor	P.30
Mosquito Control	P.31
Book Review	P.34
Smile	P.35
Did you Know ?	P.36
Short Story	P.37



Government of Western Australia  
Department of Regional Development



**ROYALTIES  
FOR REGIONS**

Keeping you informed of what is happening in the Community of Cue



The Dryblower is a non-profit community newspaper edited, printed produced and distributed by the Cue CRC.

## **CONTACT**

CRC Robinson Street, Cue

Ph: (08) 9963 1198

Fax: (08) 9963 1197

Email: [cue@crc.net.au](mailto:cue@crc.net.au)

Contributions, articles and advertisements must be dropped in, posted, faxed or emailed to CRC Cue, by **30th** of each month for publication on **7th** of following month.

## **ADVERTISING RATES**

SIZE	B & W	COLOUR
FULL PAGE	\$30.00	\$60.00
HALF PAGE	\$15.00	\$30.00
QUARTER PAGE	\$10.00	\$20.00
EIGHTH PAGE	\$5.00	\$10.00
All Advertising rates are incl. of GST		

### **Disclaimer**

The information in this publication is of a general nature and does not necessarily reflect the views of the CRC or its employees. While the editor will attempt to publish all contributions submitted, I reserve the right to edit or refuse to publish any contributions which may be considered to be defamatory or inappropriate. No liability shall be incurred by the editor for any omissions or errors in published articles and contributions.

If you are unable to collect your copy of



simply complete the form below and send it with your remittance to:-

**Editor**

"The Dryblower"

CRC Cue

Name.....

Postal Address.....

.....

Date.....

Subscription.....

Subscriptions are for a 12 month period from the date stated on your form.

**\$24.00 per year (incl GST)**

## **Distribution Outlets** **for The Dryblower**

Bell & Co  
Murchison Traders  
Cue Shire Office  
Cue Post Office  
Murchison Club Hotel  
CRC Cue  
Cue Village Office  
Cue Caravan Park  
Queen of the Murchison B & B  
Red Dust Treasures

**EDITIONS of The DRYBLOWER** are available electronically from either  
[cue.crc.net.au](http://cue.crc.net.au) or  
[shire@cue.wa.gov.au](mailto:shire@cue.wa.gov.au)



## From the Editors Desk

As I put the finishing touches to edition 8 of "The Dryblower " I was suddenly hit with the thought " Would

somebody be doing something similar when preparing Edition 108 for printing" and then I seriously began to wonder would there be people to read such an edition in fact would there be a Cue in ten years time?

It has been most noticeable in the four years that Jenni and I have called Cue home that the population is ever so slowly dwindling to the point that as a community we have to ask ourselves do we in Cue have a future or are we destined to become another ghost town like Big Bell or Day Dawn. Small towns such as ours are experiencing a rural drift in the context of economic restructuring, globalisation, social inequities, environmental adversities and public attitudes.

Australia needs to retain small towns such as Cue for a number of reasons including the preservation of cultural identity and protection of primary production. Australia is one of the most urbanised countries in the world with 86% of its population living in urban areas. Yet more than three fourths of its sustenance relies on the production in rural areas. Currently the dilemma of policy makers is whether to support continued growth of cities or to supplement rural growth.

The need to build a strong community for rural sustainability hinges on the need to understand community strengths from a purely economic point of view to one which encompasses "the social" viewpoint. This approach incorporates the building of social capital and other resources into rural communities. The key elements are:

- Community Spirit
- Strong Leadership
- Partnerships
- Volunteers
- Skills & Knowledge

There are some real life examples of towns around Australia that are facing similar challenges to those we face in Cue and have had some outstanding successes in arresting their decline and in fact have begun to grow.

None of these successes have come easily but if we are to survive we have to begin looking at ways to ensure Cue's long term survival. The sad fact is that if we don't then ever so slowly we will see some of the services we take for granted disappear, until suddenly we no longer have a school, a police station or a nursing post and if that should happen we will probably lose businesses as well.

As a community we have to insist that our elected representatives, be they Commonwealth, State or Shire understand that we are serious in our endeavours to maintain Cue as a living breathing identity and a place that people enjoy living in.

From a shire viewpoint we should be looking for grants that are people orientated rather than infrastructure based, It is no point having wonderful footpaths and roads if there is no one to use them. We also need to find ways to encourage financial partnerships with private enterprise, state government services to hopefully bring residents to the town. Naturally none of this will be easy but the bare facts are that if we do not begin to actively discuss, debate and raise issues NOW it may soon be to late.

Obviously tourism is another plank in our survival but we can not rely on that entirely. However it would be to our advantage if Cue was to become more tourist friendly and once again we have to be very proactive in this regard and not just talk about plans that will not come to fruition for many years.

Research has shown that high levels of satisfaction and a strong sense of belonging have assisted the strengthening of successful communities. The large pool of social capital in those towns in terms of volunteer work, entrepreneurial initiative, co-operation, trust, citizenship involvement, willingness to give time to community have all contributed to their success as a strong community despite the rural drift.

Cue's future is in all of our hands, and whilst it is important that our rubbish is cleared efficiently today the need for us to all be involved in finding ways to guarantee a future for Cue is equally if not more important.

**Ian W. Dennis (Editor)**

# ALL THE FUN OF CUE FUN DAY 2014





## THANK YOU

***Thank you to all our sponsors, supporters, volunteers and most importantly to all those who came and enjoyed the day. Without all of you our Cue Fun Day would not have been the wonderful success it was. We sincerely hope that you all enjoyed what was a really great day for Cue.***



## President's Report

Two noteworthy events occurred during the past month, firstly the Cue Fun Day which was very well attended both by locals as well as visitors from neighbouring shires. The second was "the Big Cuppa" which raised approximately \$600 for cancer research. I would like to publicly acknowledge and thank the efforts of everyone involved in these programmes as they certainly entertain and inspire.

I and Cr King serve on the M.R.V.C. (Murchison Region Vermin Council) this body is primarily focussed on building a dog proof fence so the contained area can be used for the raising of small animals particularly sheep. Funding for the next 100 km has been approved and a project co coordinator should be named after our next meeting scheduled for June 10 2014. The ramifications for a successful venture are large as it should lead to the re establishment of food industries based upon these animals.

Later this month the C.E.O. and I will meet with the board of the Mid West Development Commission in Wiluna. This will allow us an opportunity to give an overview of issues we face, particularly those we anticipate happening due to budget cuts.

The C.M.C.A (campervan and motor home club of Australia) made a presentation to Council on the subject of qualifying Cue as an R.V. (recreational vehicle) friendly town. The principal criteria are availability of a short term, low cost parking area with access to water, together with a dump point for waste. The benefit to Cue is in "capturing" tourists travelling in their self contained R.V.s who normally pass through town and stay over in rest areas. The C.M.C.A. have done considerable research on the economic benefits to towns like Cue and are also able to part fund dump point installations and provide signage. The subject will come up as an agenda item once the C.E.O. has been able to cost the exercise.

Lastly, I note the Post Office is due to move to it's new home at Murchison Traders at the end of this month. Sentimentally I am saddened at the ending of a long tradition in one of our lovely historic buildings, and even more the dedicated and friendly service provided over the past twenty odd years by Neil and Maggie. We wish them every happiness in their retirement and I am confident they will make many more friends as they travel the roads of Australia. All endings are of course simply new beginnings and we look forward to the establishment of a successful postal service by Ann, Warren, Luke and Amy.

Regards,

Roger

## From the C.E.O.s Desk

### Shire of Cue – New Employees

The Shire of Cue is now able to advise that the three positions recently advertised, namely;

Works and Services Manager;

Senior Administration Officer; and

Gardner / Reticulation officer

have now been filled. I believe our new staff will add significant value to the Shire of Cue and I look forward to the contribution that they will make.

#### Works and Services Manager

The Shire of Cue have appointed Mr Paul O'Connor to this position. Paul has had over 15 years of Local Government experience as a Civil Engineer. Paul has a Bachelor of Science (Geology), Bachelor of Engineering, graduate diploma in computing and an advanced certificate in Works Management (Municipal & Roads).

Prior to Paul's engagement with the Shire of Cue, Paul was the Manager – Newman Infrastructure Operations with the Shire of East Pilbara. Paul has also had senior positions with Goulbourn Murray Water, Transfield Services, John Holland, Shire of Strathbogie and the City of Seymour.

#### Senior Administration Officer

The Shire of Cue have appointed Ms Noelene Meredith to this position. Noelene has had considerable experience in Local Government in Queensland, Victoria and Western Australia. Noelene has held the positions as the Deputy CEO for the Shire of Woodanilling, Barcaldin Regional Council and Jericho Shire Council.

Noelene is currently finishing of her Bachelor of Business Administration and is enrolled to undertake a Diploma of Local Government Administration through C.Y. OConnor TAFE.

#### Gardner / Reticulation Officer

The Shire of Cue have appointed Mr Robert Atkins to this position. Robert has had over 6 years experience as a Gardner and prior to this position was employed by the Shire of Morawa as the Garden Supervisor. Rob has had considerable experience with reticulation systems during his time at Morawa and as a self employed Gardner. Rob has also worked with sub surface water management.

Rob has a certificate 3 in conservation and land management and a cert 2 in rural operations. Rob is also a qualified automotive mechanic.



*Your local connection*

The BBQ at the Caravan Park was attended by the majority of the park patrons, everyone had a great time and as the night wore on, the gold nugget stories were like fishing stories they just kept getting bigger. The fire was still witnessing revellers and tall tales till 3am. We had great feedback from the night. Everyone and their dog came to the BBQ.



**Next BBQ 21<sup>st</sup> June**

**Meet and greet from 6pm**

**At the Ablution Block**

**Markets held on the 25<sup>th</sup> May 2014 were very popular with all the stallholders doing very well.**

**Thankyou to all who came and supported the morning, it was greatly appreciated.**



**Next Markets**

**Will be**

**29<sup>th</sup> June 2014**

**9am -12noon**

**Please contact Ruth**

**99631198 if you wish to have  
a stall**



# St Patrick's Catholic Church



## Liturgies for June, July and August ***NB change of times***

Sunday 08 Jun	Celebration of the Word with Communion	10.00 am
Sunday 15 Jun	Celebration of the Eucharist (Mass)	8.00 am
Sunday 13 Jul	Celebration of the Word with Communion	10.00 am
Sunday 20 Jul	Celebration of the Eucharist (Mass)	8.00 am
Sunday 03 Aug	Celebration of the Word with Communion	10.00 am
Sunday 17 Aug	Celebration of the Eucharist (Mass)	08.00 am

St Patrick's is located on the corner of Marshall and Dowley Streets.  
St Patrick's is under the pastoral care of the Sisters of the Good Samaritan of the Order of St Benedict.  
Sr Gerri Boylan sgs 9963 4179

The St John Ambulance hall was used to hold an applied first aid course on the 31<sup>st</sup> of May and the 1<sup>st</sup> of June. The course was well attended by the locals who enjoyed themselves especially as the instructor was one of our own Chrissy Phillipa (Jolly).



## Dates to remember

18<sup>th</sup> June .....movie night

21<sup>st</sup> June .....BBQ Caravan Pk

29<sup>th</sup> June .....Cue Markets

# Movie Night

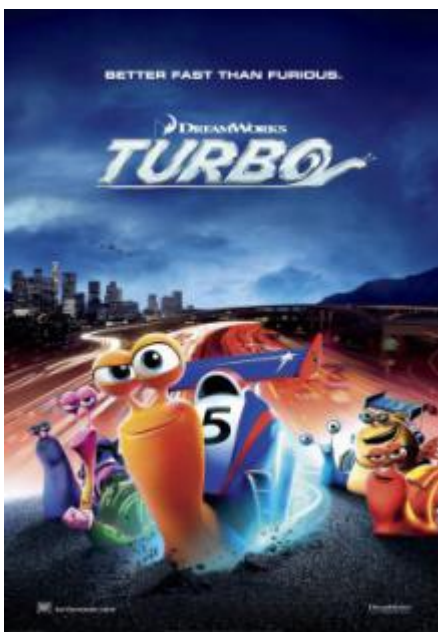
**The Movie night was a great success with approximately 40 attendees turning out to see the Movie pint size. The canteen raised money for the St John Ambulance.**



## NEXT MOVIE NIGHT

**THURSDAY THE 18<sup>TH</sup> JUNE AT 6.30 DOORS OPEN AT 6:15PM**

**PRE MOVIE SNACK SALES, PROCEEDS TO CUE AMBULANCE**



**TURBO** Family/Animation, Rated G, 96 Minute  
Featuring Voices of: Ryan Reynolds, Paul Giamatti, Maya Rudolph

**Turbo** is a snail who dreams of being the greatest racer in the world. His obsession with speed has made him an oddity and outsider in the slow and cautious snail community. Turbo desperately wishes he could escape the slow-paced life he is living, and he gets that chance after a freak accident leaves him with the power of incredible speed.



# ***J. T. Gregorys'***

## ***Cue***

### ***Lubritorium***

### ***And***

### ***Repair***

### ***Facility***

## **Motor & General Engineering**

*Automotive Transport Civil-Mining*

Mechanical repairs, Tyre repairs

Air-conditioning Repairs & Windscreen Replacement

Located at rear BP Roadhouse

**JEFF – PH: 0419 845 003**

**EMAIL: jeffgregory4@hotmail.com**

Open from 6:30am

**NOW an authorised inspection station**

Hamish, a young Scottish lad, and his girlfriend Heather, were sitting in silence on the bank of a beautiful Loch one evening, enjoying the tranquillity.

Heather turns to Hamish and says "A penny for your thoughts".

Hamish replies, "I was wondering if I might hold your hand?"

She takes his hand and they sit quietly a while longer.

Heather again asks Hamish "A penny for your thoughts".

He replies, "I was wondering if I might have a wee kiss?"

She gives him a tender, lingering kiss and they both return to gazing silently over the loch again.

A short time later she asks "A penny for your thoughts"

He replies, "I was just wondering what happened to the first two pennies?"

**Providing service to the Murchison**

**"For cue"**



Cue

Community Resource Centre

*your local connection*

The Cue Community resource Centre has  
now started

a

# Book exchange

Please bring your books to  
33 Robinson Street and browse  
the collection



Government of **Western Australia**  
Department of **Regional Development**



**ROYALTIES**  
FOR REGIONS

# The humble lemons many uses

## Tips & Recipes for lemons and other citrus

- Choose medium sized lemons that are bright and firm with a fine grained skin. Coarse large lemons tend to have thick skins, therefore less juice. A lemon that feels heavy for its smaller size usually means more juicy flesh which is what you are aiming for.

- Lemon peels boiled in a kettle will dissolve the brown stuff that often builds up on the bottom. Bring the water to a boil and allow to sit for about an hour. If it's really stained, a little scrubbing - with the peel - will get it clean and ready for some serious tea drinking!

- Wash your cutting board and pots & pans with fresh lemon juice to get rid of fish, garlic or onion smells.

- When on land, I squeeze lemon juice into my dishwasher prior to running a wash - gets glasses and dishes really sparkling.

- Make a paste from lemon juice and salt and gently scrub stainless steel rails, kitchen sinks etc then rinse with water. This can remove mildew stains and odour.

- To clean and deodorise microwave ovens, add 4 tablespoons lemon juice to a cup of water in a large bowl. Boil on high for 5 minutes, allowing the steam to condense on the inside of the oven. Then wipe clean.

- To create blonde highlights, rinse hair with a quarter cup of lemon juice added to three quarters of a cup of water and sit in the sunshine for a while.

- Lemon juice is a good disinfectant. Use undiluted on minor wounds and facial blemishes or blackheads, a few times a day.

- Drink the juice from half a lemon added to a teaspoon full of honey and hot water every morning to keep your skin clear. This will also relieve mild constipation!

- Apparently you can train a dog to stop barking by squirting lemon juice at their head and shouting "quiet!"

- Lemon and lime juice can be bought at supermarkets in handy squeeze bottles made from 100% juice - a great standby when no fresh citrus is available.

- Wrap your lemons or limes in foil and store in a cool dry place - they should keep up to 3 months.

- Instead of bleach, soak garments in mixture of lemon juice and baking powder prior to wash. Mix lemon juice and baking soda and rub on stains before washing.

- Ants hate lemons - squeeze juice in places ants enter - slices of lemons can be places around entrances also. Wash the floor & counters with mixture of lemon juice, rinds in water for natural insect repellent.

- Stop fruit and veggies like potatoes, cauliflower, apples and avocados from discolouring by either squeezing over or put some juice in the water while cooking .

- A teaspoon of lemon juice added to rice can prevent rice from sticking.

- Add some lemon juice to a sponge or cotton ball and place in fridge to keep it fresh.

- Toss lemon rinds into simmering water along with cloves, cinnamon sticks, and orange peels, for a great smell!

# RECIPE

## What's your citrus tip or recipe?

### LEMON DELIGHT

2 tbsp flour  
1/2 tsp baking powder  
2 tbsp butter  
2/3 cup caster sugar  
1/4 cup lemon juice  
finely grated lemon rind from 1 lemon  
2 egg yolks  
2 egg whites, stiffly beaten  
1 cup milk  
pinch salt



Sift flour, baking powder and salt together. Beat butter and sugar. Sprinkle dry ingredients over butter mixture and fold in lemon juice and rind. Add egg yolks and milk then gently fold in beaten egg whites. Pour into a greased oven dish and stand in a pan of cold water. Bake in a moderate oven for 40 minutes.

### LEMON CHICKEN WINGS 8 chicken wings

2 tbsp olive oil  
2 tbsp garlic, crushed

1/4 cup lemon (or lime) juice

Place chicken wings in a bowl.

Mix all the other ingredients and pour over the chicken.

Cover and refrigerate overnight. Baste with any remaining mixture during cooking.

The oil, garlic and lemon or lime juice makes an excellent marinade for any fish or chicken dish.

## Don't throw your squeezed lemons away so fast!

They are great for cleaning hands that have been handling fish, garlic or other smelly smells. They are also a great air freshener. Just leave them in your sink overnight.

Smelly pots & pans, plastic, countertops, etc? Take the squeezed lemon and rub it around. Wipe with paper towel to remove pulp. Rinse if necessary...

Has anyone heard what has been said about what Casanova used squeezed lemons for???



## Dust of Uruzgan by Fred Smith



This Presentation is scheduled to held on the 22<sup>nd</sup> of August 2014 in the Cue Shire Hall.

Fred Smith combines beautiful songs, stunning projected photographs by military and civilian photographers and humourous and touching stories to bring us *Dust of Uruzgan*, a highly acclaimed album performed live with a two piece band and based on his time in Afghanistan as a diplomat and singer/songwriter. *Dust of Uruzgan* tells the story of the 20,000 young Australians who, for the last eight years, have made a difference in the war-ravaged country of Afghanistan.

The effect of this combination of mediums is powerful. Smith was actually there and the stories he tells are of real people and events. Audiences will leave the venue with a quiet sense of connecting with something real and important.

*"A great work of art, a great suite of songs...an amazing thing if you get to see him perform it in concert"*

**Richard Glover, ABC 702 Radio**

*"An exceptional songwriter...a cycle of songs that are raw, remarkably honest ... that offers an intimate perspective on the war in Afghanistan."*

**Bruce Elder, Sydney Morning Herald**

*"This is an unforgettable night out with a relaxed vibe overall and highly recommended for those who want a glimpse of Afghanistan beyond the headlines."*

**Deborah Hawke, The Barefoot Review**

## TRIVIA FOR JUNE

- June is the sixth month of the year in the Gregorian calendar, with a length of 30 days. The month is named after the Roman goddess Juno, wife of Jupiter and equivalent to the Greek goddess Hera.
- At the start of June the sun rises in the constellation of Taurus; at the end of June the sun rises in the constellation of Gemini. However due to the precession of the equinoxes, June begins with the sun in the astrological sign of Gemini, and ends with the sun in the astrological sign of Cancer. June is the month with the longest daylight hours of the year in the Northern Hemisphere and the shortest daylight hours of the year in the Southern Hemisphere.
- June in the Northern Hemisphere is the seasonal equivalent to December in the Southern Hemisphere and vice versa. The month of June in the Northern Hemisphere is in Spring until the 21<sup>st</sup>, when Summer begins.
- June is known for the large number of marriages that occur over the course of the month. June is named after Juno or Hera. Juno was the goddess of marriage and a married couple's household, so some consider it good luck to be married in this month.
- In both common and leap years, no other month begins on the same day of the week as June. This month and May are the only two months that have this.
- The solstice called the Summer solstice in the northern hemisphere and the Winter Solstice in the southern Hemisphere occurs on the dates varying from 20 June to 22<sup>nd</sup> June. In the pagan wheel of the year the summer solstice is the time of Litha and the winter solstice is that of Yule.
- The traditional June birthstone is the pearl.
- The June birth flower is the rose, or the honeysuckle, as roses and honeysuckle bloom throughout June. June is also sometimes called the "Rose Month".
- Disney's Donald Duck's "birthday" is June 9.



June

Annie Anthony

02.06

Valerie Dongara

14.06



# HOUSES FOR RENT

## Three fully furnished rental properties Available.

1 x 3 bed 1 bath

1 x 3 bed 1 bath

1 x 4 bed 1 bath

} starting at \$500pw Neg.

All rooms have individual air conditioners and all houses fitted with RCD units and smoke alarms to comply with new Government regulations.

“Very tidy properties that would suit discerning families working in the mining industries.”

All enquiries to

Levi Clarke

Mob: 0458 508 824 email: leviclarke7@bigpond.com

### CUE RAINFALL FIGURES

	2013	Days	2014	Days
Jan	46.6	8	93.8	5
Feb	1.4	2	5.2	1
Mar	25.3	4	8.2	2
Apr	8.1	2	5.4	1
May	23.4	3	39.0	5
June	30.2	5	0	0
Jul	10.6	5	0	0
Aug	2.6	2	0	0
Sep	3.0	3	0	0
Oct	0	0	0	0
Nov	9.5	3	0	0
Dec	0	0	0	0
Total to May	104.8	19	151.6	14
Year Total	160.5	37	N/A	

Highest May since 1894	129.7
Lowest “ since 1894	0
Mean for May	25.7

# Poet's Corner

## Our Corrugated Iron Tank

*Our tank stood on a crazy stand,  
Bare to the burning sun,  
White hot as glares the desert sand  
And dismal to the eye.  
Its lid was like a rakish hat,  
The tap bent all awry,  
And with a drip so constant that  
It almost dripped when dry.*

*It was a most convenient tank  
Wherein most things could fall;  
Where snakes came from the bush and  
drank,  
And rabbits used to call,  
The mice committed suicide,  
The gum leaves sank to rest  
And in it possums dropped and died  
And hornets made their nest.*

*But stark within my memory  
I see it once again  
When we all looked at it anxiously -  
Days when we hoped for rain;  
I hear the hollow sounds it made,  
Like some prophetic drum,  
As I tapped rung on rung, afraid  
Of dreadful days to come,*

*When mother in despair would pray  
As low the water sank:  
Four rungs, three rungs, two rungs, and, aye,  
How miserly we drank;  
And there was none for face and hands,  
Waste was a wicked thing.  
There in the baked and parching lands,  
With hope our only spring.*

*Next came the fatal 'one rung left!'  
(How cruel words can be!)  
As we all stood for joys bereft,  
Dumb in our misery:  
And then I tapped the tank in pain -  
Those knells of drought and doom:  
Our tank at last gone dry again,  
Our home cast down in gloom;*

*But, Oh, the joy that filled our hearts  
When came the bounteous rain,  
And the drain-pipe sang in fits and starts  
And we filled the tank again!  
We felt as if we'd riches won,  
That life again was sweet;  
And overjoyed then, everyone,  
We even washed our feet!*

BY HAL GYE (JAMES HACKSTON)



©Ren Leishman \* illustrationsOf.com/442713

Taken from the Guardian, an actual letter sent by the Inland Revenue (Tax Office):

Dear Mr Addison,

I am writing to you to express our thanks for your more than prompt reply to our latest communication, and also to answer some of the points you raise. I will address them, as ever, in order. Firstly, I must take issue with your description of our last as a 'begging letter'. It might perhaps more properly be referred to as a 'tax demand'. This is how we, at the Inland Revenue have always, for reasons of accuracy; traditionally referred to such documents.

Secondly, your frustration at our adding to the 'endless stream of crapulent whining and panhandling vomited daily through the letterbox on to the doormat' has been noted. However, whilst I have naturally not seen the other letters to which you refer I would cautiously suggest that their being from 'pauper councils, Lombardy pirate banking houses and pissant gas-mongerers' might indicate that your decision to 'file them next to the toilet in case of emergencies' is at best a little ill-advised. In common with my own organisation, it is unlikely that the senders of these letters do see you as a 'lackwit bumpkin' or, come to that, a 'sodding charity'. More likely they see you as a citizen of Great Britain, with a responsibility to contribute to the upkeep of the nation as a whole.

Which brings me to my next point. Whilst there may be some spirit of truth in your assertion that the taxes you pay 'go to shore up the canker-blighted, toppling folly that is the Public Services', a moment's rudimentary calculation ought to disabuse you of the notion that the government in any way expects you to 'stump up for the whole damned party' yourself. The estimates you provide for the Chancellor's disbursement of the funds levied by taxation, whilst colourful, are, in fairness, a little off the mark. Less than you seem to imagine is spent on 'junkets for Bunterish lickspittles' and 'dancing whores' whilst far more than you have accounted for is allocated to, for example, 'that box-ticking façade of a university system.'

A couple of technical points arising from direct queries:

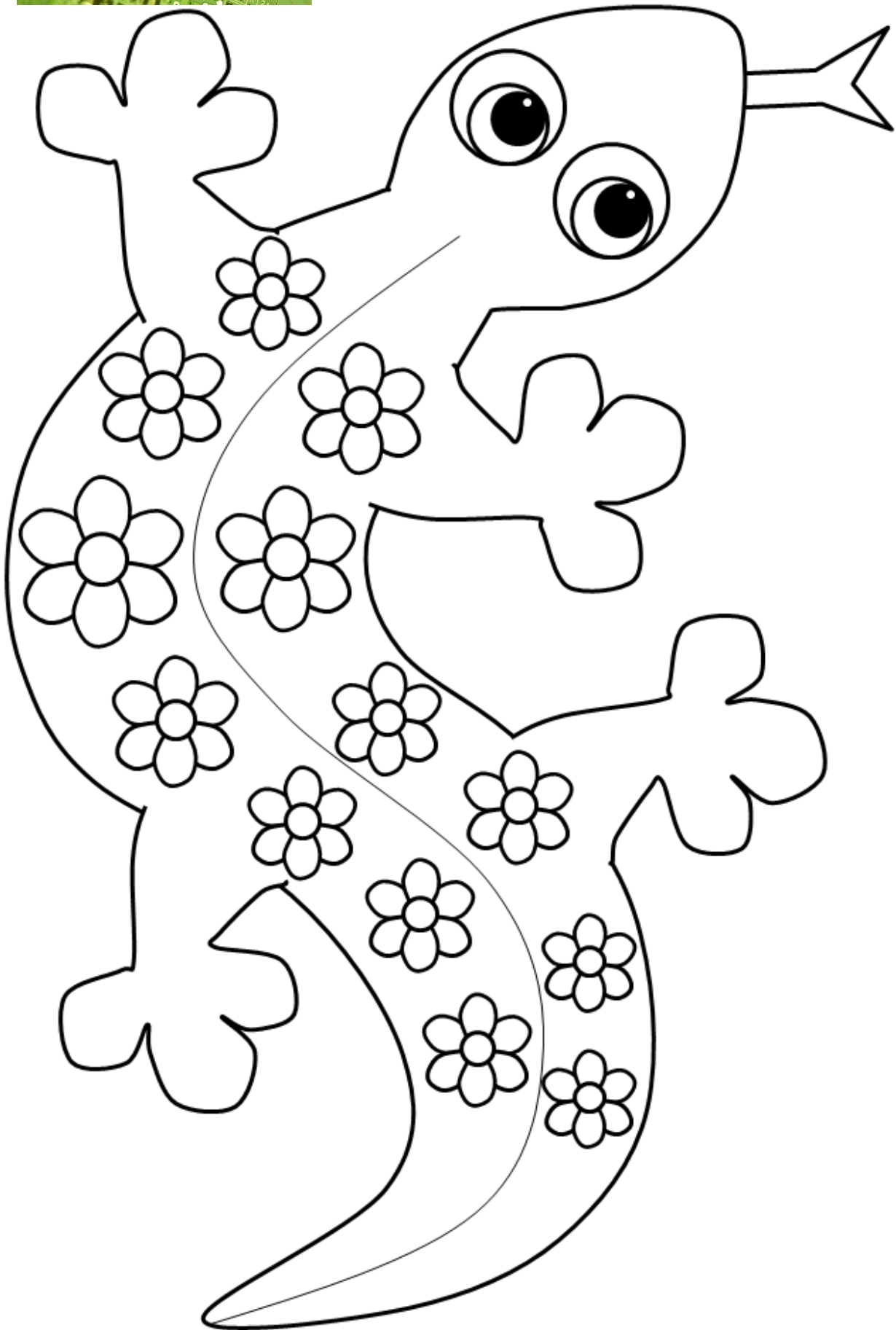
1. The reason we don't simply write 'Muggins' on the envelope has to do with the vagaries of the postal system
2. You can rest assured that 'sucking the very marrows of those with nothing else to give' has never been considered as a practice because even if the Personal Allowance didn't render it irrelevant, the sheer medicallogistics involved would make it financially unviable. I trust this has helped. In the meantime, whilst I would not in any way wish to influence your decision one way or the other, I ought to point out that even if you did choose to 'give the whole foul jamboree up and go and live in India' you would still owe us the money.

Please forward it by Friday. Yours Sincerely,

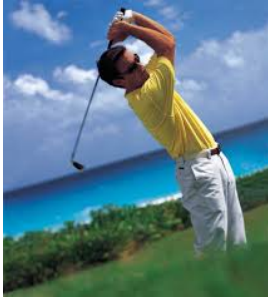
H J Lee

Customer Relations

Inland Revenue (Tax Office)



# Sandfire Meekatharra Annual Open Golf Tournament



## Big amateur cheque goes east to Leinster

A \$1,000 cheque – said to be the largest amateur golf prize in the Midwest/Goldfields region – has been handed to this year's Net Men's Winner of the annual Sandfire Meekatharra Annual Open Golf Tournament. The cash prize is just within amateur golf trophy limits.

“The fantastic sponsorship from Sandfire Resources and Doray Minerals has made this year's Meeka Open a landmark event,” said Meekatharra Golf Club President Clarrie Lauritsen.

Shaun Ryan, General Manager of Sandfire's DeGrussa Copper Mine, said: “Sandfire is very proud to be associated with the Meekatharra Golf Club. The small group of members do an amazing job running a very professional tournament every year.”

Brendon Stuart from the Leinster Golf Club was this year's Men's Net winner, with an impressive stableford score of 70 points over the 27-hole event.

Brendon, who has become a regular player in the Sandfire Meekatharra Open, said he was thrilled with the win and loves coming to Meekatharra to enjoy the great course and fantastic outback hospitality.

The Ladies' Net Winner was Cecelia Jimenez from Sandstone Golf Club with the Men's Gross taken out by Clarrie Lauritsen (Meekatharra); the Ladies' Gross went to Lana Lefroy (Sandstone).

The tournament prelude – the Doray Ambrose Team Event – was won by a team from Fortescue Golf Club (Newman) with a net score of 53. Team members Warren and Debbie Sarginson, G Simpson and I Porter were surprised with their win but very happy to take out the major net prize for the Saturday tournament.

“Sandfire are already on board to sponsor next year's Meeka Open and it promises to be another awesome, fun weekend,” Clarrie Lauritsen said.





# OUTBACK *Parks & Lodges*

Leonora • Laverton • Coober Pedy • Cue • Wiluna

## Leonora Lodge

1126 Otterburn St, Leonora, WA 6438

P 08 9037 7053

E [leonora@opl.net.au](mailto:leonora@opl.net.au)

- Swimming pool
- Gymnasium
- Recreation room
- Self contained units
- Dining room
- BBQ area
- Guest laundry
- Mining shutdowns
- Foxtel
- Single rooms with en-suite
- Double rooms with en-suite

## Leonora Caravan Park

42 Rochester St, Leonora, WA 6438

P 08 9037 6568

E [leonoracp@opl.net.au](mailto:leonoracp@opl.net.au)

- Powered sites
- Semi self-contained cabins
- Budget en-suite rooms
- Grass camping area with shade
- Campers kitchen & free BBQ area
- Guest laundry

## Laverton Caravan Park

211 Weld Drive, Laverton, WA 6440

P 08 9031 1072

E [lavertoncp@opl.net.au](mailto:lavertoncp@opl.net.au)

- Self contained cabins & units
- Single rooms with en-suite
- On site vans
- Powered sites
- Grass camping area with shade
- Guest laundry
- Self contained ablutions
- Breakfast available
- Campers kitchen & BBQ area
- Convenience store
- Dining room
- Mining shutdowns

**At your service**  
local trades & services guide



**JQ SATELLITE SERVICES**

**Jesse & Jane Quarrington**

PO BOX 1952  
Geraldton WA 6530  
0437 789 246  
[jqsat@westnet.com.au](mailto:jqsat@westnet.com.au)

**JQ SATELLITE & ANTENNA SERVICES** are available for all types of antenna and satellite work etc. We specialise in Free to Air Satellite and VAST systems, Digital TV, Two Way Radio and HAM installations and Antenna building. For the past 7 years our time has been taken up doing the NBN, ABG and SOTA Satellite Internet but due to the current reduction in this type of work we are now able to commence work in other areas.

For friendly and competitive service, please give Jesse a call 0437 789 246. We are located in Geraldton but do travel to regional and remote area and will combine any travel costs with other local work. Please phone the number above or email [jqsat@westnet.com.au](mailto:jqsat@westnet.com.au) and we are also on Facebook [www.facebook.com/JQSat](http://www.facebook.com/JQSat)  
ABN: 54 143 797 083

**BROKEN WINDSCREEN?**  
**Call 9965 5555**

**NOVUS**  
**AUTO GLASS.**

*The Windscreen Repair Experts.*

WINDSCREEN CHIP & CRACK REPAIRS  
WINDSCREEN REPLACEMENTS  
WINDOW TINTING  
SIDE & REAR WINDOWS  
EARTHMOVING MACHINERY  
FARM MACHINERY  
MINESITE READY  
NATIONWIDE WARRANTY

Approved by ALL Major Fleet & Insurance Companies

Novus Autoglass Geraldton  
Servicing the Mid West Region since 1998



**We can come to you!**  
Highest Quality Friendly Service  
13-17 Sanford Street, Geraldton



**Call 9964 1188**

Tint-a-Car Geraldton  
Proud to be part of  
Australia's Biggest Tinting Network  
'Bringing the cool since 1972'

**Tint-a-Car**  
...Home and Office





## Winter in the garden

The winter garden is special. Flower colours seem more clearly defined. Cold enhances their pigmentation and deepens their colours. Deciduous trees that have lost their leaves sketch a tracery of bare branches against blue winter skies. And the crisp, cool air makes it a pleasure to work outdoors.

### Winter colour

During winter, many plants continue growing in preparation for the spring show to come. Bulb leaves have emerged from the soil and seedlings are making steady progress. Sweet peas are moving steadily up their supports. Watch out for snails and slugs – they love the cooler time of year – and feed flowers regularly with a liquid fertiliser such as Thrive or Aquasol.

### Winter perfumes

Flower fragrance seems sharper and stronger in the winter air, too. Think of the clear sweetness of daphne perfume, the soft notes of pretty pink luculia and the spicy scent of wintersweet (*Chimonanthus praecox*).

The nutmeg bush (*Tetradenia riparia*- pictured) develops winter-blooming, pale mauve plumes with a sweet scent. Its leaves, too, release a pleasantly spicy aroma when crushed.

Early sweet peas begin blooming in winter, and the perfumed spikes of jonquils and hyacinths brighten the garden.

### Winter problems

Caterpillars may still be hanging on. If they're causing unsightly damage, use Dipel or Success to clean them up. Squirt some PestOil onto citrus trees. This will smother scale insects and the baby stink bugs that are already hiding in the tree. Check citrus (especially lemons and grapefruit) for the characteristic swellings produced by the native citrus gall wasp. The current season's swollen sections should be cut off, wrapped in plastic and put firmly into the bin.

After their leaves have fallen, give deciduous fruit trees a clean-up spray with a copper fungicide (e.g. Yates Fungus Fighter or Leaf Curl Copper Fungicide). Repeat this just before the buds begin to swell in spring. A mid winter application of Yates White Oil will take care of scale and mites.

Oxalis are winter-growing weeds that, although pretty, are very persistent. Dab with Zero Weeding Brush or spray with Zero Rapid. Small bulbs in the ground will then emerge, so follow-up treatment will be necessary.

### Winter planting

Winter's the ideal season to plant and transplant deciduous trees and shrubs.





# Cue Community Resource Centre

*your local connection*

**33 Robinson St Cue**

**PH: 08 9963 1198**

**Fax 08 9963 1197**

**Email: [cue@crc.net.au](mailto:cue@crc.net.au)**

**Web: [cue.crc.net.au](http://cue.crc.net.au)**

**WE DO PHOTO PRINTING  
ON OUR SONY PHOTO LAB**

## Services

Internet access

Laminating, printing both A4 & A3

Faxing & photocopying

Photo lab machine printing 6 x 4

Secretarial services

## Products for sale

CD, CDR, DVD, DVDR

Flash drives

Cue wrapping paper

Cue magnetic picture frame

Cue Magnetic jigsaw puzzle



**We are open**

**Monday to Friday**

**8.30am to 3.30pm**

**Weekends & public holidays closed**

## **Cue CRC**

**is your local centrelink agency**

**where you can**

**Make centrelink phone calls**

**Fax documents to centrelink**

**Use the computer to do your  
centrelink business**

**Have your documents verified**



## **CUE CRAFT GROUP**

**MEETS EVERY TUESDAY AFTERNOON**

**At the community resource centre**

**12NOON TILL 3PM**

**COME AND HAVE A CUPPA**

# ***In and around Cue***



Last Sunday we had a visit from the FAR RIDERS BIKE CLUB whose aim was to ride 1000km in one day. Most of the riders had achieved that by the time they got to Cue. The group enjoyed a healthy lunch and a well earned rest at the Murchison Club Hotel before returning to Perth.

A few stayed and enjoyed a ride around Cue before returning home the next day.

**A stretch of the legs before lunch**



**The chariots rest while their riders partake of food and beverage at the Pub**



Dear Sir,

Subject :

### **Big Cuppa for Cancer held on 29th May, 2014**

The Cue Senior Citizens Association would like to thank all those who made cakes and cooked lots of yummy food for the morning tea,

To all those who helped out and donated a great big thank you. Thanks also to Ian and Jenni at the Murchison Club Hotel for letting us use the Beer Garden and the facilities.

The Morning Tea raised \$640.00

A special thanks to Mary Rad for her continuous support.

The lucky \$50.00 was won by Russell Armstrong with Ticket No. 65.

The cakes and savouries left over were sold on the day.

Yours

Kerry Seivwright

President

Cue Senior Citizens Association.

Like it or not, you have to pay your taxes. The trouble is that understanding taxation requires more than a genius mind. Even Albert Einstein admitted, "The hardest thing in the world to understand is the income tax." So, if you are wading through reams of paperwork, trying to make sense of all the mumbo jumbo, it's time to take a break. Read these funny tax quotes over a cup of hot cappuccino and share a laugh with your friends. If the coffee doesn't work, these tax quotes will surely perk you up.

#### **Mark Twain**

The only difference between a tax man and a taxidermist is that the taxidermist leaves the skin.

#### **Will Rogers**

It is a good thing that we do not get as much government as we pay for.

#### **Robert A. Heinlein**

There is no worse tyranny than to force a man to pay for what he does not want merely because you think it would be good for him.

#### **Arthur Godfrey**

I am proud to be paying taxes in the United States. The only thing is I could be just as proud for half of the money.

#### **H. L. Mencken**

Unquestionably, there is progress. The average American now pays out twice as much in taxes as he formerly got in wages.

#### **Albert Einstein**

[on filing for tax returns] This is too difficult for a mathematician. It takes a philosopher.

#### **John S. Coleman**

The point to remember is that what the government gives it must first take away.

#### **Herman Wouk**

Income tax returns are the most imaginative fiction being written today.

#### **Plato**

When there is an income tax, the just man will pay more and the unjust less on the same amount of income.

#### **Winston Churchill**

We contend that for a nation to try to tax itself into prosperity is like a man standing in a bucket and trying to lift himself up by the handle.



# **Mosquito Control**

## **Everyone's Responsibility**

Following unseasonal rains in January and February in Cue, and an apparent increase in Mosquito numbers, the Shire of Cue sought the assistance of the Department of Health (DoH) to investigate population numbers and possible virus links to two (2) recent cases of Ross River Virus (RRV) in the Shire. One case of RRV was recorded in the Shire in February and one in March. Six cases were also recorded in Mt Magnet with four cases in February and a further two cases in March.

Officers from the DoH visited Cue and Mt Magnet on March 18&19. Mosquito trapping was undertaken by the DoH and the Shire, to determine mosquito species prevalent in the area. Mosquito traps use light and carbon dioxide from dry ice to attract mosquitoes which are caught and then frozen for identification.

Traps were set at the northern end of Lake Austin, where Nallan Creek crosses the Beringarra-Cue Road and around the Cue townsite in six locations. Collection was undertaken over two (2) days.

Mosquito numbers during the collection were very low as compared to other places that the DoH survey. Two species made up just over half of the total number mosquitoes collected. One is a known vector of RRV and the other a common nuisance species. The RRV vector readily bites humans and can be a severe nuisance pest. It is typically found after rainfall during spring, autumn and summer in arid regions of Western Australia. The nuisance species is found in containers holding water such as septic tanks, roadside drains, swales, and other water-holding infrastructure. The majority of the remaining species collected were species of which the relationship to disease is unknown.

The DoH has recommended that the Shire's mosquito fogging be commenced about a week after rainfall events during warmer periods and continuing until adult number have dropped. There is little more that the Shire can do due to the intermittent nature of rainfall, however there is much that residents can be doing to reduce mosquito numbers. Residents can assist with the control of nuisance and disease carrying mosquitoes by;

- Disposing of all containers which hold water
- Keep ornamental ponds stocked with mosquito-eating fish, e.g. goldfish;
- Keep margins free of vegetation;
- Keep swimming pools well chlorinated and filtered and free of dead leaves;
- Fill or drain depressions in the ground that hold water;
- Vent pipes on septic tank systems must be fitted with mosquito proof cowls. Seal all gaps in lid and ensure leach drains are completely covered;
- Screen rainwater tanks with insect proof mesh, including inlet, overflow and inspection ports. Ensure guttering does not hold water;
- Empty pot plant drip trays once a week or fill with sand. Empty and clean animal and pet drinking water once a week;
- Some pot plants (such as bromeliads) hold water in their leaf axils. These should also be emptied of water once a week.

Residents should also protect themselves by not being bitten by mosquitoes by:

- At home screen all doors and windows. Doors should be self-closing and open outwards;
- When camping screen caravans, tents, swags and other sleeping equipment or use a mosquito net;
- Use repellents containing DEET (50-200g/litre diethyl toluamide) or Picaridin;
- Wear long loose fitting and preferably light-coloured protective clothing;
- Always take protective measures when mosquitoes are prevalent outdoors;
- Recognise and avoid areas of mosquito activity, e.g. wetlands, salt marshes, billabongs, river floodplains.

Reducing mosquito numbers in our community and controlling potential nuisance and disease is everyone's responsibility. If you have any questions about the Shire of Cue, Mosquito Control Programme please contact the Shire office on 99638600



The Department of Regional Development is the major sponsor of the Regional Achievement and Community Awards. They have passed on your details to seek your help to promote this year's call for nominations and in the hope that the Centre will either nominate for the Awards or nominate someone that is making a real community difference. Alternatively please give us the name of an individual or group that we can invite to nominate.

Nominations are being sought in the following categories:

- **Horizon Power** Leadership and Innovation Award
- **Rinehart** Development of Northern Regional WA Award
- **Curtin University** Teaching Excellence Award
- **CSBP** Environment Award
- **LandCorp** Sustainability Award
- **Prime Super** Community Group of the Year Award
- **Perth Airport** Events and Tourism Award
- **Western Areas Ltd** Community Service and Volunteering Award

*One of the eight category award winners will also be selected as the Department of Regional Development Regional Achievement and Community Award State Winner.*

If you have a specific enquiry, please contact the Awards Office on 9201 1155, email [wa@awardsaustralia.com](mailto:wa@awardsaustralia.com) or visit the website for details on how to nominate at [www.awardsaustralia.com](http://www.awardsaustralia.com)

The key dates for the Awards are as follows:

**Nominations Close:** Wednesday 13<sup>th</sup> August 2014

**Judging:** Wednesday 1<sup>st</sup> October 2014

**Awards Gala Presentation Dinner:** Friday 14th November 2014 (Perth Convention and Exhibition Centre).

Thank you for your support and we hope you will nominate someone for the Awards.

**WIN**  
A Share in  
**\$18,000**  
in Bank Accounts from  
Commonwealth Bank



**REGIONAL ACHIEVEMENT & COMMUNITY AWARDS**  
*Stand Up and Be Counted*  
**NOMINATIONS NOW OPEN**

Click here  
to nominate online  
or find out further  
information

Has someone made a difference in your life? If you know someone, or maybe it is your business, group, club or organisation that is providing an invaluable service in your community, why not nominate for an award. Get a pat on the back and the recognition well deserved.

Prize Patron:



Winners of each category will receive a \$2,000 bank account from Commonwealth Bank.  
The Commonwealth Bank invites nominations for the 2014 awards  
**2014 Categories open for nomination**

	Overall State Winner <b>Regional Achievement and Community Awards</b>		Curtin University <b>Teaching Excellence Award</b>		Prime Super <b>Community Group of the Year Award</b>
	Horizon Power <b>Leadership and Innovation Award</b>		CSBP <b>Environment Award</b>		Perth Airport <b>Events and Tourism Award</b>
	Rinehart <b>Development of Northern Regional WA Award</b>		LandCorp <b>Sustainability Award</b>		Western Areas <b>Community Service and Volunteering Award</b>

Proudly Supported By:










The Awards Office Phone: 9201 1155 Fax: 1300 884 648 PO Box 7273, Cloisters Square, Perth WA 6850 Email: [wa@awardsaustralia.com](mailto:wa@awardsaustralia.com) Website: [www.awardsaustralia.com](http://www.awardsaustralia.com)

Nominations close: Wednesday, 13 August 2014



## Hard Waste Verge Collection

16<sup>th</sup> JUNE 2014 – 6:30 AM

We will now be providing a hard waste verge collection once a year. Please make sure your waste is neatly placed on the verge and not obstructing footpaths— by 6.30 AM.

### **We will only remove:**

- Old furniture Stoves, fridges and other - Fridge doors **MUST** be removed
- Whitegoods
- General household junk

### **We will not remove:**

- Household waste / Food Scraps
- Flammable liquids Chemical liquids including paint, oil
- Motor vehicle parts - tyres, batteries etc
- Asbestos cement products

The Shire will remove up to one small truck load, no more than 6 cubic meters from each property.

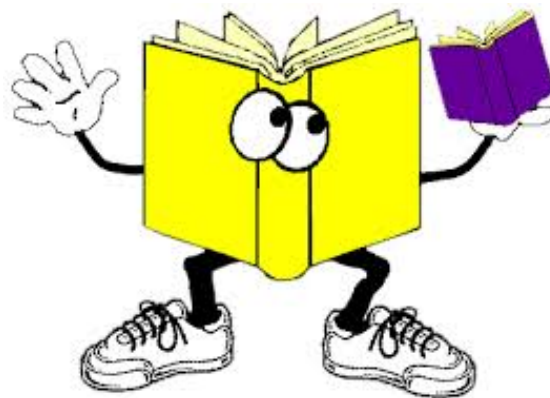
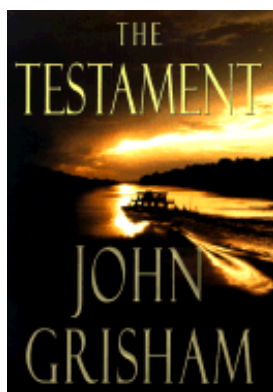
Any waste left on verge outside of collection times/dates will be removed by the Shire with an invoice addressed to you, to cover our costs.

Your co-operation is greatly appreciated, not only by us but also by your neighbours.

Please contact Daniel Reynolds for further enquires.— **0459 602 498**

John McCleary—Chief Executive Officer  
Shire of Cue

# book review



In **John Grisham's** earliest novels, the protagonists were underdogs who had conflicts to resolve, often involving personal or legal jeopardy. More recently, however, his main characters seldom seem to be in real danger. They quickly get ahead of the game while their adversaries have to play catch-up. The heroes cruise through the books, leaping every plot hurdle with ease.

Multibillionaire Troy Phelan produces a secret will which disinherits his entire known family of ex-wives and bratty children moments after he has tricked them into certifying his competency, moments before he leaps to his death. Everything is left to a previously unknown, illegitimate daughter who has spent the last several years as a South American missionary.

Nate O'Riley, a lawyer fresh from the latest of many addiction rehab programs, is sent to Brazil to find the new heir. He has numerous entertaining adventures along the way—plane wrecks, sinking boats, alcoholic relapses, a harrowing bout with dengue fever and a religious conversion—but he locates Rachel while lost in the vast jungle by an unbelievable stroke of luck. His subsequent misadventures serve no more purpose than to prolong the process of getting word back to the U.S. that Rachel has no interest in becoming the richest woman in the world. If it becomes known that she wants to have nothing to do with her estranged father's estate, the legacy will be divided among Phelan's remaining children. The billionaire's lawyers realise that this huge inheritance would destroy these would-be heirs and anyone around them, so they defend Rachel's legacy in spite of her wishes.

Phelan and his lawyers have done such a good job of anticipating the disinherited children that the families spend much of the novel trying to come from behind. Even their most underhanded and devious attempts to defeat the new testament are easily thwarted by O'Riley and his partners. There is virtually no conflict or dramatic tension.

The real focus of the novel is Nate O'Riley and his predictable transformation from addict and drunk to hero, which occurs without much ceremony and to no reader's surprise. He is touched by God and becomes devoted to Rachel after their brief encounter in the jungle. Back in the U.S., when he gets to strut his stuff in depositions, it is clear that ten years of bingeing and abuse have not affected his legal expertise one bit. The army of opposing lawyers equipped with hired witnesses is no match for him.

Perhaps Grisham believes that allowing one of his characters to redeem himself through God is venturing into cutting-edge territory. Enough so that it is not necessary to create any other sort of conflict to drive this book. Enough so that it is not necessary to add any depth to most of his characters. The children are uniformly vile and lack a single redeeming trait. Nate is a nice enough man, and readers will root for him through his misadventures, but he never seems to be at risk of failing. It would have been more compelling if the fight on behalf of Rachel Lane, which supposedly depends on O'Riley surviving his demons, didn't look like it had been mostly resolved by the end of chapter 4.

## Funny Tax Jokes

The difference between the short and long income tax forms is simple. If you use the short form, the government gets your money. If you use the long form, your accountant gets your money.

A fine is a tax for doing something wrong. A tax is a fine for doing something right.

The avoidance of taxes is the only intellectual pursuit that carries any reward. *John Maynard Keynes*

A couple of weeks after hearing a sermon on Psalms 51:2-4 [knowing my own hidden secrets] and Psalm 52:3-4 [lies and deceit], a man wrote the following letter to the Inland Revenue's HM Inspector of Tax:

'I have been unable to sleep, knowing that I have cheated on my income tax. I understated my taxable income, and have enclosed a cheque for £150. If I still can't sleep, I will send the rest.'

My problem lies in reconciling my gross habits with my net income. *Errol Flynn*

About the time we think we can make ends meet, somebody moves the ends. *Herbert Hoover*

The haggis and European tax law have much in common. They both involve bloody processes, the end results are a mystery and those of a squeamish disposition should not get involved in the making of either. Anon

A woman gets on a bus with her baby. The bus driver says: "Ugh, that's the ugliest baby I've ever seen!" The woman walks to the rear of the bus and sits down, fuming. She says to a man next to her: "The driver just insulted me!" The man says: "You go up there and tell him off. Go on, I'll hold your monkey for you."

Doc, I can't stop singing the 'Green Green Grass of Home'. He said: 'That sounds like Tom Jones syndrome'. 'Is it common?' I asked. 'It's not unusual' he replied.

***I was having dinner with Garry Kasparov (world chess champion) and there was a check tablecloth. It took him two hours to pass me the salt.***

A young blonde woman is distraught because she fears her husband is having an affair, so she goes to a gun shop and buys a handgun. The next day she comes home to find her husband in bed with a beautiful redhead. She grabs the gun and holds it to her own head. The husband jumps out of bed, begging and pleading with her not to shoot herself. Hysterically the blonde responds to the husband, "Shut up...you're next!"

***I went down the local supermarket, I said, "I want to make a complaint, this vinegar's got lumps in it", he said, "Those are pickled onions".***





## Lodging your Tax Return

Tax time is almost up, with the final day for lodgement now only weeks away. Here is a checklist of handy hints to help you lodge on time.

**Check whether you need to lodge a tax return:** Before you start it's worth checking if you qualify for an exemption. If you were an Australian tax resident in the last financial year and paid tax under the pay-as-you-go (PAYG) withholding system or had tax taken from payments made to you, then it is likely that you will have to lodge a return.

If you think you may be exempt, to view the Australian Taxation Office (ATO) website guide on to what exceptions may apply.

**Get your paperwork together:** To prepare your tax return you will need your tax file number (TFN). If you held shares in the last financial year you will need to find your buy and sell contract notes to work out any assessable capital gains or losses. Income from these shares can be found on dividend statements.

Other documents you may need include a payment summary from each employer you received income from during the financial year, annual tax summaries for managed funds, bank statements for interest earned and tax invoices for any deductible expenses.

If you use e-tax (see below), you can download some of your information using the pre-filling service. If you use a tax agent these documents will need to be forwarded to them.

**Choose you method of lodgement:** [e-tax](#) is a fast, free and secure service offered by the ATO that you can use to prepare and lodge your tax return online. Most refunds or tax debt notices are issued within 12 business days.

You can also lodge a paper based tax return and this can take up to 42 days to receive a refund or tax debt notice.

**Don't forget the deadline:** Tax returns cover a financial year which runs from 1 July to 30 June. Once the financial year ends you have until **31 October** to lodge your tax return if you are doing it yourself. If you are using a registered tax agent you have until **31 March** the following year.

**How to get more help:** You can use a registered tax agent such as an accountant, who can prepare and lodge your tax return for you for a fee.

If you would like more information on how to lodge your tax return yourself view the ATO guide.

**Use the ATO tax app to get progress reports:** This tool puts tax help in the palm of your hand during tax time when you need it most. The app can be used on your smart phone or tablet and help you calculate your tax payable, view handy income tax rates and read about a host of hot tax topics.

Once you have lodged your tax return you can follow its progress on the app

**Tax refunds:** Once your tax return has been processed, the ATO will issue you with a notice of assessment. This will result in you either being entitled to a refund or having a debt to pay to the ATO.

If you think you made a mistake, you can change your return. If you think the ATO has made a mistake, you can contact them or object to your assessment.

## BOUNCED CHEQUE LETTER

Below is an actual letter sent to a bank. The bank manager thought it amusing enough to have it published in the New York Times.

Dear Sir

I am writing to thank you for bouncing my check with which I endeavoured to pay my plumber last month. By my calculations, three nanoseconds must have elapsed between his presenting the check and the arrival in my account of the funds needed to honour it. I refer, of course, to the automatic monthly deposit of my entire salary, an arrangement which, I admit, has only been in place for eight years.

You are to be commended for seizing that brief window of opportunity, and also for debiting my account \$50 by way of penalty for the inconvenience caused to your bank. My thankfulness springs from the manner in which this incident has caused me to rethink my errant financial ways.

I noticed that whereas I personally attend to your telephone calls and letters, when I try to contact you, I am confronted by the impersonal, overcharging, prerecorded faceless entity which your bank has become.

From now on, I, like you, choose only to deal with a flesh-and-blood person. My mortgage and loan repayments will, therefore and hereafter, no longer be automatic, but will arrive at your bank, by check, addressed personally and confidentially to an employee at your bank whom you must nominate.

Be aware that it is an offence under the Postal Act for any other person to open such an envelope. Please find attached an Application Contact Status which I require your chosen employee to complete.

I am sorry it runs to eight pages, but in order that I know as much about him or her as your bank knows about me, there is no alternative. Please note that all copies of his or her medical history must be countersigned by a Notary Public, and the mandatory details of his/her financial situation (income, debts, assets and liabilities) must be accompanied by documented proof.

In due course, I will issue your employee with a PIN number which he/she must quote in dealings with me. I regret that it cannot be shorter than 28 digits but, again, I have modelled it on the number of button presses required to access my account balance on your phone bank service. As they say, imitation is the sincerest form of flattery.

Let me level the playing field even further. Press buttons as follows:

- 1.- To make an appointment to see me.
- 2.- To query a missing payment.
- 3.- To transfer the call to my living room in case I am there.
- 4.- To transfer the call to my bedroom in case I am sleeping.
- 5.- To transfer the call to my toilet in case I am attending to nature.
- 6.- To transfer the call to my mobile phone if I am not at home.
- 7.- To leave a message on my computer, a password to access my computer is required. Password will be communicated at a later date to the Authorised Contact.
8. To return to the main menu and to listen to options 1 through 7.
9. To make a general complaint or inquiry.

The contact will then be put on hold, pending the attention of my automated answering service. While this may, on occasion, involve a lengthy wait, uplifting music will play for the duration of the call.

Regrettably, but again following your example, I must also levy an establishment fee to cover the setting up of this new arrangement.

May I wish you a happy, if ever-so-slightly less prosperous New Year?

Your Humble Client



# CUE HEALTH CENTRE

## CUE HEALTH CENTRE



Victoria Street  
Cue WA 6640  
Tel: 9963 0600

## Grams Clinic Mount Magnet

**PH:** 9963 4111 or 99634016

Doctor Anna Stuart, Female Doctor for  
women's health issues

17<sup>th</sup> and 18<sup>th</sup> March Bookings essential.

Grams Podiatrist Dates for Cue  
7/4, 5/5, 3/6, 7/7, 4/8, 6/10, 3/11, 1/12.

Grams GP clinic for Cue

10<sup>th</sup> March with diabetic nurse

17<sup>th</sup> March

7<sup>th</sup> April

14<sup>th</sup> April with diabetic nurse

5<sup>th</sup> May

12<sup>th</sup> May with diabetic nurse

9<sup>th</sup> June with diabetic nurse

16<sup>th</sup> June

April 2014	
R.F.D.S GP Clinic	8th , 22nd
Child Health Nurse	9th , 23rd
Podiatrist	7th
Physiotherapist	14th
Dietician	14th
Occupational Therapy	Please enquire
Home and Community Care	Twice Weekly
Psychologist	Please enquire

## MURCHISON DENTAL TEAM



63 Laurie Street  
Mt Magnet WA 6638  
Tel: 0427 386 647

## Cue Nursing Post Opening Hours

Monday to Friday 8.00am - 12.00pm

1.00pm - 4.30pm

Weekends

Closed

Contact Details Phone (08) 99630100

Fax (08) 99630150

For after hours nurse

Phone 99630100

**Do Not**

**visit the nurse at home**

**Remember ring**

**99630100**

Visiting Schedule 2014		
Town	1st day	last day
Meekatharra	10th February	21st February
Mt Magnet	3rd March	14th March
Yalgoo	31st March	11th April
Meekatharra	28th April	9th May
Mt Magnet	26th may	6th June
Sandstone	9th June	13th June
Meekatharra	23rd June	4th July
Cue	21st July	1st August
Meekatharra	18th August	29th August
Burringurrah	1st September	5th September
Mt Magnet	15th September	26th September
Meekatharra	13th October	24th October
Mt Magnet	10th November	21st November
Meekatharra	8th December	19th December

***AMBULANCE  
POLICE  
FIRE BRIGADE***

PHONE **000**

FOR AFTER HOURS NURSE

PHONE 99630100

**DO NOT**

VISIT THE NURSE AT HOME

REMEMBER RING **99630100**

# June 2014



Sun	Mon	Tue	Wed	Thu	Fri	Sat
1	2	3	4	5	6	7
8	9	10	11	12	13	14
15	16	17	18	19	20	21
22	23	24	25	26	27	28
29	30					

*Secret Waterfall. Cue Shire.*

*Photo: Fred Rose*