

# The Dryblower



Keeping you informed of what is happening in the Cue Community



The Dryblower is a non-profit Community newspaper edited, printed, Produced and distributed by the Cue CRC

### **Contact**

CRC Robinson Street, Cue  
Phone: (08) 9963 1198  
Fax: (08) 9963 1197  
Email: [cue@crc.net.au](mailto:cue@crc.net.au)

Contributions, articles and advertisements must be dropped in, posted, faxed or emailed to Cue CRC by the last week of the month for publication on the 7th of the following month.

### **Advertising Rates**

<b>Size</b>	<b>B/W</b>	<b>Colour</b>
Full page	\$30.00	\$60.00
Half page	\$15.00	\$30.00
Quarter page	\$10.00	\$20.00
Eighth page	\$5.00	\$10.00

All Advertising rates are incl. of GST

### **Disclaimer.**

**The information in this publication is of a general nature and does not necessarily reflect the views of the CRC or its employees. While the editor will attempt to publish all contributions submitted, I reserve the right to edit or refuse to publish any contributions which may be considered defamatory or inappropriate. No liability shall be incurred by the editor for any omissions or errors in published articles and contributions.**

**If you are unable to collect your copy of**



**Simply complete the form below and send it with your remittance to:-**

Editor  
"The Dryblower"  
Cue CRC

Name.....

Postal Address.....

.....

.....

Date:.....

Subscription:.....

Subscriptions are for a 12 month period

### **Distribution Outlets for the Dryblower**

Bell & co  
Murchison Traders  
Cue Shire  
Murchison Club Hotel  
Cue CRC  
Queen of the Murchison B&B  
B.P. Roadhouse

All editions of the Dryblower are available electronically from either  
[Cue.crc.net.au](http://Cue.crc.net.au) or  
[Shire@cue.wa.gov.au](mailto:Shire@cue.wa.gov.au)





## From the Editors Desk

The other day while strolling down the street I bumped into a fellow citizen, we exchanged pleasantries and then he commenced to tell me things about a mutual acquaintance which I have to say were far from complimentary to that person. When he finished I wished him a good day and went home, but I was left with the thought as to

what the discussion had achieved and why so many like conversations like that take place in Cue and no doubt other places

Why do people talk badly about others. I wondered, and couldn't figure out why. But I think I found an answer that has given me some peace, and helped me to prevent talking badly about others.

Here's what I found: There are three general motives behind people talking badly about another person.

1. They're talking with someone to solve a problem they're having with the individual, but lack the skill to do it in a kind way.
2. They want to discredit the other person, or cause harm to the other person. Their motive is to hurt, or they feel they must defend themselves from hurt, so they hurt first.
3. They want to be accepted, so they find common humour, albeit the evil type, etc. to talk about to make themselves feel better.

The first group: They talk about the problem, may go into detail, may exaggerate a little, but their motive is mainly to get an idea of how to solve the problem, and not to hurt the other person. They may talk inappropriately, or in a way that may leave a negative light on the person they're talking about, but its not hateful.

The second group: People who talk badly about another person to cause harm: They seem to feel like you have some major impact in their life, and they are scared of you. For example, a friend who feels like her life is determined by how much boys like her will often bad mouth another girl who the boys like more than her - or that she thinks they like more than her. She does this because she feels like she must manipulate the people around her to stay safe. If she took responsibility for her own actions, and her own ability to change, to act, she wouldn't feel so threatened by other people. So usually, people who talk maliciously are really very terrified people. They feel they must manipulate the people around them to be safe. They don't start by changing their own actions and choosing how they feel, they let life around them tell them who they are. Its a very threatened place to live.

Third group: These people are a combination of the two categories above. They talk about others because they have nothing better to do. They just talk without considering the people or friendships that will be damaged, its just entertainment.

Bottom line, I found that the more someone is trying to harm and manipulate, usually the more sensitive and insecure that person is on the inside, so much so that they feel the need to control everyone around them to keep their lives stable.

When I find myself talking about someone, I ask myself - if this person were listening to me talk, would I feel honest and respectful of that person, even if what I'm saying is negative? That's my guide.

As Socrates once said "Strong minds discuss ideas, average minds discuss events, weak minds discuss people"

Ian W. Dennis  
Editor



# *President's Page*

## **PRESIDENTS PAGE MARCH 2015**

When I was elected to Council in May 2011 one of my first acts was to move a motion for the restoration of Brockman Park; which was an undertaking I had given to Val Williams. I am very pleased to see that work has now started on the project and my only regret is that Val is not here to see it for herself.

At our first Council meeting for 2015 Mr Domenic Martello made a presentation of Paintings by the artist Tam Ambrose, the paintings depict scenes in and around Cue. Mr Martello would like the collection to remain intact and is hoping the Shire will buy them for public display .Council will have an informal discussion during March and then formally debate a decision probably at the April Meeting.

Jayne Maes will be holding the official opening of her new Camelman Store at 11 am Friday March 13.Melissa Price the Federal Member for Durack will attend and perform the opening ceremony.

At 7.30 pm Sunday March 8 The B2M (Bathurst to Melville) will be launching their album tour at the town hall .The event is being presented by the Shire of Cue and the C.R.C. in conjunction with Country Arts W.A.

Tickets will be available at the door at a cost of \$5 each, also non-alcoholic drinks and snacks will be on sale. Look forward to seeing you there.

Regards,

Roger



# A NOTE FROM THE CEO

This edition of the Dryblower is probably somewhat of an oxymoron given the title of this publication and the weather that we have recently experienced. At the time of writing this article all the gravel Shire Roads are closed to traffic with the exception of three or four light vehicles servicing Tuckanarra Mine Site. At this stage we are not sure of the amount of damage that the roads have sustained, we are waiting on a Main Roads representative to inspect the roads so that we can make a flood damage claim. If we attempt to do anything without their approval we will not be eligible to claim flood damage monies.

I am very pleased to be able to advise that the Shire recently received its Country Local Government Fund allocation of \$358,405 that is to be used to facilitate the new light industrial sub-division. Landcorp advise that 4 of the 5 lots have already been sold. This is good news as there is scope for new businesses to set-up in town.

As mentioned by our Shire President, we have B2M performing in our hall on Sunday the 8<sup>th</sup> of March. B2M are an Aboriginal band with its roots in the Tiwi Land. Their music has a European flavour influenced by their lyrics which are sung in the Tiwi Island Language. This production is put on by WA Country Arts and the Shire of Cue, the more support we get to these events the more potential we have to be able to host other events as they come on hand.

Work has commenced on revitalising Brockman Park. I am aware that some community members are concerned about this; however, it is advised that we have consulted extensively with the Brockman family, in particular Uncle Jimmy and Darren Ryder and they are very supportive of the overall design and layout of the park.

I am aware that on Friday the 6<sup>th</sup> of March the funeral for Mrs Mary Little of Cue will take place. Mrs Little is the Aunty of Darren Ryder and she was one of the last people to be borne in the old hospital. On behalf of the Shire Councillors and Shire Staff I would like to offer the Little family our condolences.

At the last Council meeting the Council formally adopted the Shire of Cue Town Planning Scheme No2, this replaces the existing Town Planning Scheme that was proclaimed approximately 22 years ago. The new scheme reflects modern legislative and Town Planning Principals and will serve the community for many years to come.

On the 13<sup>th</sup> of March, Camel man will officially open its doors for business, It is exciting to see a new business in the main street and this will give more energy to our CBD, I wish Jane all the very best in her endeavours and I urge one and all to purchase a very distinctive product.

John McCleary, Esq, JP, bBus

Chief Executive Officer





# THE NEW CREW IN TOWN

Hi, You may have seen a few new faces around town lately and heard about a new company that has started up out at Tuckabianna. BNM Australia Group have leased the Tuckabianna processing plant from Silver Lake Resources and will be processing the Cue Battery Sands as well as some additional material from other tenements we own in the region. We have a small crew on site at the moment and will be expanding our workforce to approximately 40 people, which will include some haulage contractors from Catalano's.

So who is BNM Australia Group? We are a fairly new mining company with a goal of becoming the Biggest Name in Mining (BNM) and our operations in the Murchison area, especially our tenements close to Cue, will be our first project to become operational. We are a privately owned entity, with great vision to be a world class mining company by finding, acquiring, developing and producing quality reserves in a safe, profitable and socially responsible manner. We are excited to start our journey to achieving our goals, and especially proud that it starts with the Murchison Operations.

At BNM Australia Group we believe in working together with our local communities to ensure we leave a positive legacy in the environments in which we operate. We have had a warm welcome from the town so far and we look forward to getting to know more of you as we get settled in.

If you see any of the team around town, please say hello. We are interested in learning more about the region and hope to establish a great relationship with our surrounding community. We will continue to provide updates through "The Dryblower" to keep you informed about our exciting endeavours. In the meantime if you have any queries relating to the project, our General Manager David Vemer is available by email [David.Vemer@bnmgroup.com.au](mailto:David.Vemer@bnmgroup.com.au).

Thanks and we look forward to getting to know you

Regards,  
The Team at BNM Australia Group.



## **Position Vacant**

**The Cue CRC is looking for either a  
full time employee or parttime**

**must be able to get a  
full police clearance  
and  
working with children's clearance.**

**Please send your resume to [cue@crc.net.au](mailto:cue@crc.net.au)  
Applications close by Friday 20th March 2015**

# EASTER RECIPE



You'll need Easter chocolate moulds for this recipe

Ingredients:

375g packet milk, dark or white chocolate melts

Method:

Step 1

Place melts into a heatproof bowl over a saucepan of simmering water (make sure base of bowl doesn't touch water). Heat, stirring with a metal spoon, until melted.

Step 2

Spoon chocolate into moulds. Stand at room temperature for 10 minutes. Refrigerate for 15 minutes, or until firm. Turn out onto a clean tea towel. Repeat until all melts have been used.



# Cue Police Newsletter



There have been a number of significant events experienced in the past couple of months which has required a large contribution of time by a number of volunteers within the community. I would like to personally thank all the volunteers in the area who have donated their time to helping others. I have been exceptionally proud to see the willingness of people to give up time with their families to help complete strangers, often also at the expense of a good night's sleep. Thankyou is not a word often used but when it is often makes the sacrifice worthwhile.

## Home and Property Security

This is a topic I often find myself going back to and repeating a regular basis. With the summer now behind us, the rain upon us and the colder months approaching I feel I need to reiterate the importance of locking doors and windows and securing motor vehicles.

In a small town, isolated to a certain extent from surrounding areas, it is easy to think that you will never be burgled or have any items stolen. Unfortunately this just is not the case. Most crimes of this type occur when someone spots an open window or door and believe they will be able to just have a quick look and get out without being seen. Whilst in the ideal world we would all be able to leave doors and windows unlocked, it is just not the world we live in.

This also extends to tenements, secure all equipment and consider using CCTV footage. A number of CCTV cameras have recently gone up around some tenements at the advice of Police and we are looking at prosecuting offenders for any offences committed.

## Damage at the Community Resource Centre

Over the weekend of the 21<sup>st</sup> – 22<sup>nd</sup> February a number of small rocks were thrown through the windows at the community resource centre. If anyone has any information or witnessed anyone hanging around that area over that period I would appreciate a call so that the offenders can be apprehended and charged.

## Department of Transport Matters

The Cue Police Station will only be open for Local Residents on Wednesday mornings when we are working. If for whatever reason we are not available during that time, contact the station and I will endeavour to have an officer contact you and make an alternative arrangement.

The reason for this change, a significant number of people from Meekatharra and other areas have been travelling to Cue for Department of Transport matters which takes a significant amount of police time up and also causes delays for Cue residents who may unfairly have to wait in line behind these extra people.

Hopefully this will make access for local residents quicker and easier.

## Off Road Motorcycles / Quad bikes

Riding off road motorcycles and quad bikes on a road and within the town limits is an offence. Under legislation, a road is more than just the bitumen surface, but includes footpaths, median strips and will generally extend from fence line to fence line.

A number of people have now been spoken to and I finally know who all the offenders are by sight. If anyone witnesses people riding around town please let us know and we will take positive action.



Month	Assault	Burglary (Dwelling)	Burglary (Other)	Graffiti	Robbery	Steal Motor Vehicle
January 2014	2	0	0	0	0	0
February 2014	1	1	0	0	0	0
March 2014	1	1	1	0	0	0
April 2014	1	0	0	0	0	0
June 2014	1	2	0	0	0	0
July 2014	2	0	0	0	0	0
August 2014	1	0	0	0	0	0
September 2014	0	1	0	0	0	0
December 2014	0	1	0	0	0	0
January 2015	0	1	0	0	0	0
Totals	9	7	1	0	0	0

## Suspicious Activity

As a reminder, if you see anything suspicious please call 131 444 or contact Cue Police Station directly on 9963 8800. Feel free to call at any time 24 hours a day, 7 days a week. Don't forget though, in an emergency always call 000. If we are not at the station the phones will divert to Geraldton Police Station, please leave them a message and they will then advise us to contact you at the next possible opportunity.

Nick, Ron and Al  
Cue Police



## **Manager Works & Services – February Report**

### **Construction Crew**

Works continued on the reconstruction of the first 6.2km of **Wondinong Road**. Included in these works has been the realignment of the road and increasing the radius of 2 curves to improve road safety and to allow for 53.5m long design vehicles. The road will also be straightened and new box 900 x 600mm culverts installed.

A new gravel pit was sourced approximately 3km from the works. A haul road had to be constructed to allow trucks to transport the gravel to site. A turkeys-nest has been constructed adjacent the bore for easy water access.

The road will have a uniform cross section with 4% crown, 150mm base-course thickness, 9 metre pavement width with 1m tapered shoulders.

A by-pass track has been constructed for vehicles whilst the old box culverts are removed and the new ones installed.

### **Other Works**

The dozer and grader are used regularly for landfill maintenance.

### **Water Bores**

The shire has constructed water bores at strategic locations along Kalli Road, Beebyn-Karbar Road, Cogla Downs, Dalgara, Beringarra and Wondinong Roads to give close access to water, increasing efficiency for future works on these roads.

### **Town Crew**

The town crew continue work on the town centre median strips with upgrading of the reticulation system. Artificial turf has been laid in islands on Robinson, Darlot and Austin Streets.

Shed slabs have been poured, sheds erected and paving, retaining walls and landscaping around the 3 new shire houses has continued.

The Water Park has been refurbished. Ongoing works include cleaning, servicing pumps, replacing filters and water testing.

Brockman Park works have begun – dead trees removed and general clean up. Design plans have been approved.

The shire office reception area was repainted.

The shire depot has undergone some changes, including relocation of the 2 cargo containers.

The Works department undertake a number of tasks that are scheduled and completed on a regular basis throughout each month.

Rubbish pickup - twice weekly

Landfill maintenance

Airstrip maintenance including cleaning building and generator upkeep

Daily cleaning of public toilets

Hall maintenance

Mowing of oval

Reticulation upgrade / repair

Whipper snapping / spraying verges

Fogging / Mosquito spraying (as required)

Water Park maintenance

**Paul O'Connor**



## OUTBACK Parks & Lodges

Leonora • Laverton • Coober Pedy • Cue • Wiluna

### Leonora Lodge

1126 Otterburn St, Leonora, WA 6438

P 08 9037 7053

E [leonora@opl.net.au](mailto:leonora@opl.net.au)

- Swimming pool
- Gymnasium
- Recreation Room
- Dining Room
- BBQ area
- Guest laundry
- Foxtel
- Single rooms with en-suite
- Double rooms with en-suite

### Leonora Caravan Park

42 Rochester St, Leonora, WA 6438

P 08 9037 6568

E [leonoracp@opl.net.au](mailto:leonoracp@opl.net.au)

- Powered sites
- Semi self-contained cabins
- Budget en-suite rooms
- Grass camping area with shade
- Campers kitchen & free BBQ area
- Guest Laundry

### Laverton Caravan Park

211 Weld Drive, Laverton, WA 6440

P 08 9031 1072

E [lavertoncp@opl.net.au](mailto:lavertoncp@opl.net.au)

- Self contained cabins & units
- Single rooms with en-suite
- On site vans
- Powered sites
- Grass camping area with shade
- Guest laundry
- Self contained ablutions
- Campers kitchen & BBQ area
- Shop & Cafe
- Dining Room



# St Patrick's Catholic Church

## All Welcome



**Liturgies on Sundays for  
February and March 2015**  
***NB change of times***

<b>15 Feb</b>	<b>Celebration of the Eucharist (Mass)</b>	<b>08.00 am</b>
<b>22 Feb</b>	<b>Celebration of the Word with Communion</b>	<b>10.00 am</b>
<b>15 Mar</b>	<b>Celebration of the Eucharist (Mass)</b>	<b>08.00 am</b>
<b>22 Mar</b>	<b>Celebration of the Word with Communion</b>	<b>10.00 am</b>

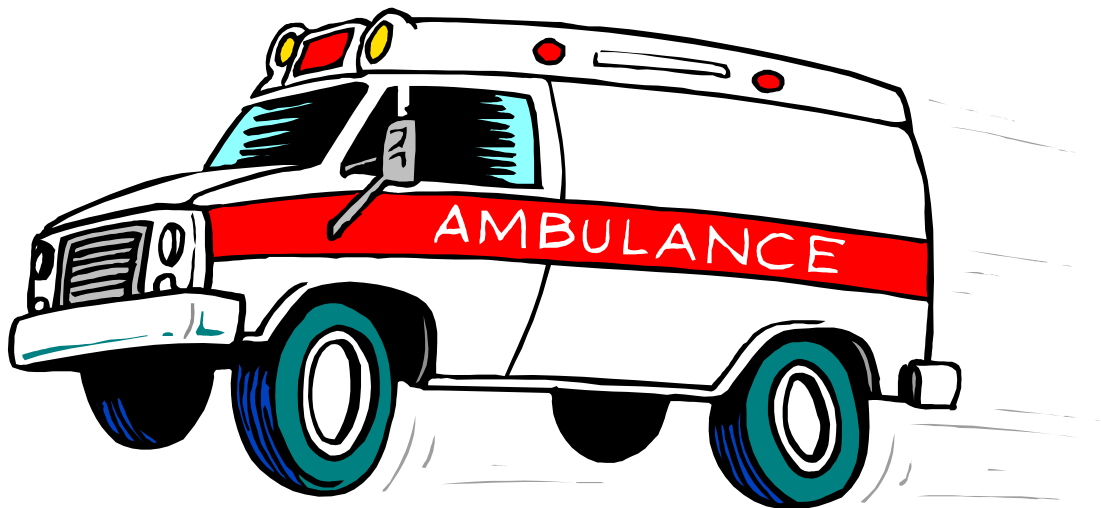
St Patrick's is located on the corner of Marshall and Dowley Streets.  
St Patrick's is under the pastoral care of  
the Sisters of the Good Samaritan of the Order of St Benedict.  
Sr Gerri Boylan sgs 9963 4179

# ST JOHN AMBULANCE CUE

## MEMBERSHIPS

FAMILY \$81

SINGLE \$49



JOIN UP TODAY & SAVE A LIFE



# Save the date!

**Saturday 3 October 2015**

**Charles Darwin Reserve, Perenjori WA**



## **BLUES FOR THE BUSH CONCERT • OPEN DAY**

Visit our website for information and while you're there,  
be sure to check out the fantastic 2014 event video.

Watch this space for more details

[bluesforthebush.org.au](http://bluesforthebush.org.au)





**This photo is of a weathered stony meteorite which was found last year 6km west of Cue by Peter Tegg. I have sent a slice of it to the Museum, where Dr Alex Bevan is at this time testing it to find out what category it is.**  
**Udo Kaschner.**

### CUE SENIOR CITIZENS OP SHOP

The Cue Senior Citizens have a second hand shop in the Cue Post Office building. The shop is open;

Monday, Wednesday and Friday Mornings

Time: 9am –12 noon

All second hand clothes, pots & pans, crockery books are gratefully accepted. However, we do not accept electrical appliances or underwear due to liability and hygiene.

Please ensure all donations are clean.

All enquires to Kerry Seivwright: (08) 9981 5897



# Dear Editor

As a ratepayer and a user of the Cue/Berringarra bitumen road I would like to make a few comments on an issue which seems to be somewhere beyond consensual resolution. I would certainly prefer to have a bitumen than a gravel road between my homestead and town.

Council needs to get this decision made sooner rather than later as the present no maintenance situation means there will soon be no bitumen road to argue over.

It is Councils prerogative and responsibility to make this decision IN THE COMMUNITY INTEREST as the road belongs to the community, not the Council.

There seem to be a wide range of financial assumptions floating around. My understanding is as follows:

1. Council has \$3.4 million dollars from Jack Hills for the road.
2. Council has a quote of \$250,000 per annum for maintaining the existing surface.
3. Council has been unable to obtain any (hopefully) lesser quote and the figures being thrown around are no more than opinions which Council cannot use as a basis for decision making.
4. Interest on the mine money will be round \$100,000 per annum. Council could reasonably add \$20,000 to \$50,000 per annum to this from its own maintenance budget.
5. However, with annual inflation at 2% the real interest return is only \$30,000 so over the years the capital amount would effectively diminish and eventually disappear.
6. The \$3.4 million might be enough now to restore a reasonable gravel road. It certainly won't be in 10 or 20 years.

On these figures a Council deciding to keep the bitumen surface would appear to me to be making a very short term decision and leaving a subsequent Council to deal with the result.

As stated at the beginning, I would love to continue to have a bitumen road. If the figures I have quoted above are wrong, and anyone has access to verifiable ones that are different, or workable suggestions for another way to tackle the issue, then I and I am sure Council would love to have that information.

Tom Jackson

Austin Downs Station

# Yamatji Christian Fellowship



PLACE ! **Cue Town Hall.**

TIME ! **10-00 AM.**

**2nd SUNDAY of each Month**

**(starting on the 8<sup>th</sup> February)**

## What do we do there ?

□  
Bible teaching,

children's activity

Singing praise to God,

Encouraging each other,

Munch Lunch together

Everyone is welcome to join us.

George & Kate Taylor: 0411 954 663 or  
0422 153 692



# “Taking a step back in time.”

## Cuddingwarra

Cuddingwarra is an abandoned town in the Mid West region of Western Australia. The town is located between Cue and Big Bell.

Gold was discovered in the area in 1888 with the town being initially known as Dead Finish. The name that was chosen was the name of the nearby Cuddingwarra hill. The hill was first recorded on an application for a pastoral lease submitted by the Lacy brothers in 1878-79. The town was gazetted in 1895.

By 1898 the town supported a bi-weekly coach service to Cue and the town had its own Post Office. Three hotels were known to exist in the town - The Cuddingwarra Hotel, the Roadside Hotel and the Victory United Hotel.

The Amphlett and Keating, a mining company, presented samples of gold of considerable value to the Bank of Australia in Perth from there mine in Cuddingwarra in 1895.

A ten head battery existed in the town in 1898 which was used by the local mining companies such as Cuddingwarra Gold Mines Ltd and the Siege of Paris mine. The mill was later upgraded to a fifteen head mill when being used to treat ore from the Fraser's South Mine.

The name is Aboriginal in origin but its meaning is unknown.

Extract taken from Wikipedia



**Roberta Little**  
**Kerry Seivwright**  
**Ernie Campbell**

**08.02.**  
**14.02.**  
**27.02.**

# **A NOTE TO ALL PROSPECTORS & TOURISTS**

As the damper weather is starting to settle in please ensure you check the weather forecast before venturing out of town and please, notify someone when you are venturing out so that they can alert authorities if an issue is to arise. As a matter of courtesy please advise the person of your return to avoid any unnecessary work for volunteers.

While Cue is surrounded by a wide spread of empty land and it is fun to venture out, please ensure you have been given permission to prospect certain grounds including local stations. Further information can be found at the Department of Mines & Petroleum website.

Don't forget if you're about to travel out on our gravel roads check out the road conditions by either ringing the Shire Road Report phone line on **9963 8669**, visiting the Shire of Cue website at [www.cue.wa.gov.au](http://www.cue.wa.gov.au) then clicking on 'News' for the latest report or checking out all the road reports on the front window of the shire office. Enjoy your stay!

Have a safe trip!

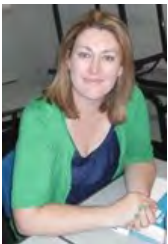
Kind regards,

CEO—John McCleary





2015 is a year of new beginnings for Cue Primary School. This year we have three new teachers who are pleased to be in Cue and who are looking forward to a fantastic year of teaching and learning. They bring with them a strong work ethic, enthusiasm and love of teaching.



Ms Kelly Murphy will be our Early Childhood teacher for students from 3yr old kindy through to Year 2.



Mr Jarred Stenfors will be our Upper Primary teacher for students from Year 3 through to Year 6. Together with Mr Jed Hunt he will supervise the High School students.



Mr Jed Hunt will be our support teacher. He will be teaching Science and Physical Education for all primary classes as well as helping with High School Supervision.

All staff are committed to Care Understanding and Excellence in regard to our students and their families. We have a three year old program at our school. If you have a three year old child who is toilet trained please come and talk to us about them coming to school. If you are Interested in 'Stay and Play' for 0-3year old children and Toy Library then please let us know and we can arrange a weekly time for these to happen. Parents/Carers bring babies and toddlers to the school and stay with them whilst they enjoy playing and being with other children and using the toys and equipment that we have in the CPAC room.

Bye for now,  
Catherine Jones  
Principal



# **“CUE AMBULANCE SUB CENTRE”**

Cue Ambulance Sub Centre would like to welcome our newest recruits and wishes to thank those volunteers who have signed up for the committee. As many people know, Cue Ambulance can only function by having volunteers and with numbers dwindling this has a massive impact on those remaining volunteers to provide as much cover as possible.

We are always looking for people that would like to volunteer with the Ambulance Sub Centre and support the town in providing an Emergency Ambulance.

Any questions then please contact me,

Helen Painter – Community Paramedic on 0437 681 562 or

[helen.painter@stjohnnambulance.com.au](mailto:helen.painter@stjohnnambulance.com.au)



And some times it's  
just hard works



## ***In my Car- avan Tonight***

***In my Caravan tonight,  
I reflect again,  
On days and times gone by,  
Of beginnings,  
Of endings  
Restarting life so many times, Its hard yet its free,  
My life sometimes echo's,  
The life it used to be,  
Moving on and forward,  
I am finding more to love,  
My gypsy like freedom,  
Loss of money,  
Loss of love,  
Yet friends I have,  
so very dear,  
They mean more than yesteryear,  
Tonight my heart is reawakening,  
to,  
the fact that I am here.  
M.P. Davies***



Cue

Community Resource Centre

*your local connection*

33 Robinson St Cue

PH: 08 9963 1198

F: 08 9963 1197

Email: [cue@crc.net.au](mailto:cue@crc.net.au)

Web: [cue.crc.net.au](http://cue.crc.net.au)



**WE DO PHOTO PRINTING  
ON OUR SONY PHOTO LAB**

**Services**

Internet access

Laminating, printing both A4 & A3

Faxing & photocopying

Photo lab machine printing 6 x 4

Secretarial services

**Products for sale**

CD, CDR, DVD, DVDR

Flash drives

Cue wrapping paper

Cue magnetic picture frame

Cue Magnetic jigsaw puzzle

**open**

Monday to Friday

8.30am to 3.30pm

Weekends & public holidays **closed**

**Cue CRC is your local**

**Centrelink agency where you can**

Make Centrelink phone calls

Fax documents to Centrelink

Use the computer to do your  
Centrelink business

Have your documents verified

**CUE CRAFT GROUP**

**MEETS EVERY TUESDAY AFTERNOON**

**At the community resource centre**

**12NOON TILL 3PM**

**COME AND HAVE A CUPPA**





# J. T. Gregorys'

## Cue

## Lubritorium

## And

## Repair Facility

### Motor & General Engineering

Automotive Transport Civil-Mining

Mechanical repairs, Tyre repairs

Air-conditioning Repairs & Windscreen Replacement

Located at rear BP Roadhouse

JEFF – PH: 0419 845 003

EMAIL: jeffgregory4@hotmail.com

Open from 6:30am **NOW an Approved inspection station**

### When Travelling Can Get Very Dangerous....

My wife and I decided to go on an organised trip to Afghanistan, to see for ourselves what the place was like. It didn't start well as the train we were travelling on broke down just few miles after leaving the station. We found ourselves stranded in a scary hell hole where no one around us spoke any English! The train, and surrounding streets were full of angry bearded types who glared at us. My wife stood out in her brightly coloured sun-dress, as all the local women were draped in black, head to toe, bur-gas. We were extremely scared and convinced that we were in deep trouble. Just then, David our group leader, ushered us off the train and around the corner from Bankstown Station to the bus terminal, where thankfully we continued our journey safely to Sydney Airport.

This is a genuine ad from 1964 when WD40 was released these days, we can't even handle Baa Baa Black sheep. How would we go with this?





### **A WOMAN'S POEM:**

Before I lay me down to sleep,  
I pray for a man who's not a creep,  
One who's handsome, smart and strong.  
One who loves to listen long,  
One who thinks before he speaks,  
One who'll call, not wait for weeks.  
I pray he's rich and self-employed,  
And when I spend, won't be annoyed.  
Pull out my chair and hold my hand.  
Massage my feet and help me stand.  
Oh send a king to make me queen.  
A man who loves to cook and clean.  
I pray this man will love no other.  
And relish visits with my mother.

### **A MAN'S POEM:**

I pray for a deaf-mute gymnast nymphomaniac with big breasts who owns a bar on a golf course, and loves to send me fishing and drinking.  
This doesn't rhyme and I don't give a s.....

### **The last kiss.**

Back on January 9th, a group of Pekin , Illinois bikers were riding west o n I-74 when they saw a girl about to jump off the Murray Baker Bridge . So they stopped.

George, their leader, a big burly man of 53, gets off his Harley, walks through a group of gawkers, past the State Trooper who was trying to talk her down off the railing, and says, "Hey Baby.....whatcha doin' up there on that railin'?"

She says tearfully, "I'm going to commit suicide!!"

While he didn't want to appear "sensitive," George also didn't want to miss this "be-a-legend" opportunity either so he asked ... "Well, before you jump, Honey-Babe...why don't you give ole George here your best last kiss?"

So, with no hesitation at all, she leaned back over the railing and did just that ... and it was a long, deep, lingering kiss followed immediately by another even better one.

After they breathlessly finished, George gets a big thumbs-up approval from his biker-buddies, the onlookers, and even the State Trooper, and then says, "Wow! That was the best kiss I have ever had, Honey! That's a real talent you're wasting, Sugar Shorts. You could be famous if you rode with me. Why the hell are you committing suicide?"

"My parents don't like me dressing up like a girl."

It's still unclear whether she jumped or was pushed.

# HOUSE FOR RENT



## VERY TIDY HOME

- 3 bed (built in robes), 1 bathroom
- Laundry, kitchen & dining room
  - Lounge with split AC
  - Evaporative AC throughout
  - Fenced property with Garage
- Fully furnished or unfurnished available
  - Owner is flexible with lease term
  - References required
- Available as serviced rental on month by month basis

## SUIT COMPANY WISHING TO HOUSE EMPLOYEES IN CUE

For more information please contact  
Cue Village  
T: (08) 9963 1002  
E: [cue@opl.net.au](mailto:cue@opl.net.au)





## **MURCHISON CLUB HOTEL MORNING COFFEE**

FEEL LIKE A COFFEE TO KICK START YOUR DAY? PERHAPS YOU FANCY A MUFFIN, A CAKE OR EVEN A TOASTIE TO GO WITH THAT CUPPA. TAKEAWAY OR DINE IN, IT'S YOUR CHOICE FROM THE CAFE "N" CUE COFFEE BAR AT THE CLUB OPEN 8.30AM-10AM TUES TO SUN.

### **LUNCH**

WHETHER YOU ARE UP FOR A SNACK OR SOMETHING MORE SUBSTANTIAL THEN WE HAVE JUST THE MEAL FOR YOU MAKE YOUR SELECTION FROM OUR TASTY LUNCH MENU, THEN EITHER EAT IN OUR CAFE "N" CUE, THE BEER GARDEN OR SIMPLY JUST TAKE IT WITH YOU.

OPEN 12 TO 1.30PM TUESDAY TO SUNDAY

### **DINNER**

TREAT YOURSELF TO A DELICIOUS CHOICE FROM OUR EXTENSIVE A LA CARTE MENU THAT IS SURE TO EXCITE YOUR TASTE BUDS. BE SURE TO CHECK OUR "SPECIALS BOARD" AS OUR CHEF LOVES TO TEMPT OUR DINERS WITH SOMETHING DIFFERENT. OPEN FROM 6PM



Morning coffee  
8.30am to 10am  
Tuesday-Sunday



Lunch  
12pm to 1.30pm  
tuesday-Sunday



Dinner  
6pm to 8pm  
everyday

*"Part of the secret of success in life is to eat what you like and let the food fight it out inside."*

**MURCHISON  
CLUB HOTEL  
HOSPITALITY  
COLD BEER  
AND  
GOOD FOOD  
SINCE  
1896  
PH:  
99631020**

EMAIL: [MURCHC@WESTNET.COM.AU](mailto:MURCHC@WESTNET.COM.AU)



## Power outage - Cue

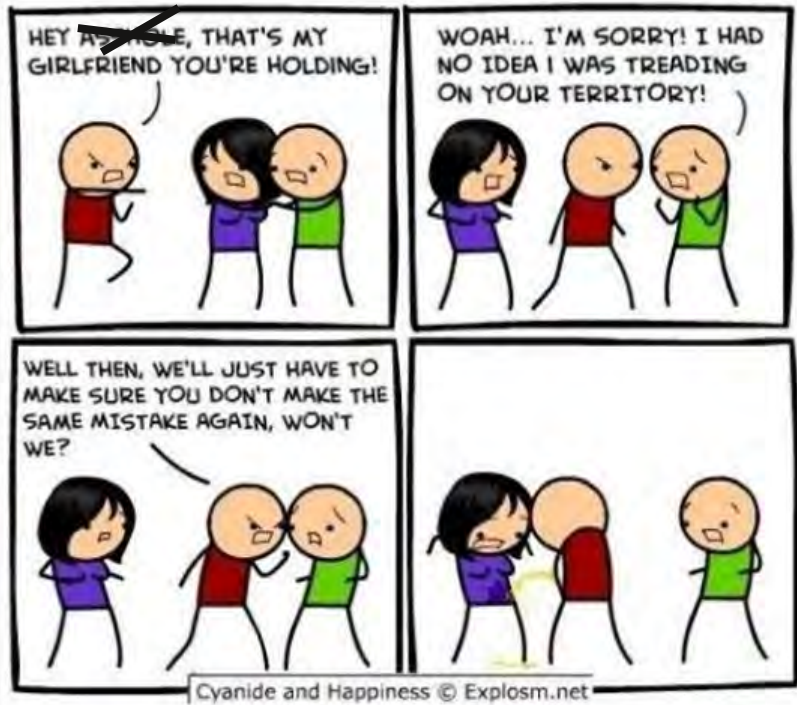
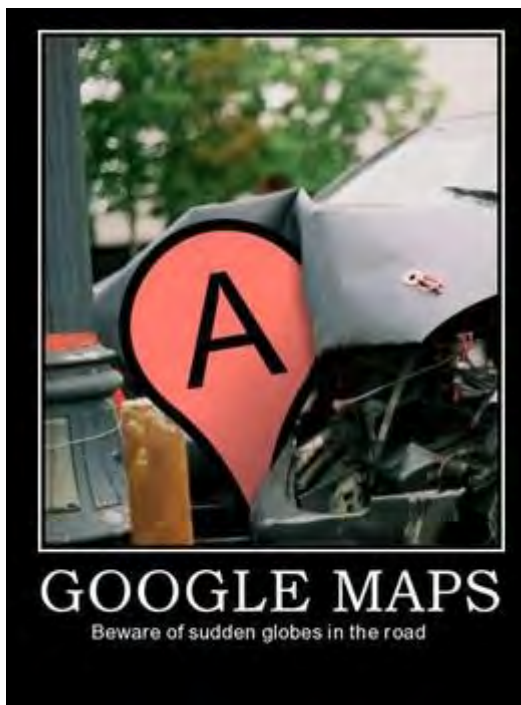
**On Wednesday 8 April 2015  
your power will be turned off  
for about 30 minutes between  
4.45 am and 6 am**

The power needs to be turned off so we can safely connect your house to the brand new power station we have built in your town.

For more information:

Please call Craig on 0409 493 138

# Laughter is the best medicine!



If you have any stories or laugh worthy pictures you would like to share please drop them into Melissa @ the Shire Office or email them through—[admin@cue.wa.gov.au](mailto:admin@cue.wa.gov.au)



Me and the wife were sitting at a table at her high school reunion, when she kept staring at a drunken man swigging a beer as he sat at a nearby table,

i asked her "do you know him?"

"yes" she sighed, "he's my old boyfriend, i understand he took to drinking right after we split up those many years ago and i hear he hasn't been sober since"

"wow" i said "who would think a person could go on celebrating for so long!"

and that was then the fight started....



## BLACK FRIDAY

### PROS:

BIG DISCOUNTS ON MOSTLY SUBPAR ELECTRONIC GOODS.



### CONS:

SALES BEGIN AT 5 A.M. AND YOU WILL LIKELY BE CRUSHED IN A HUMAN STAMPEDE.



when girls drive



when guys cook





# ***Kitchen Fun!***

## CHOCOLATE FUDGE PUDDING



- 1 1/2 cups self-raising flour
- 1/4 cup cocoa powder
- 1 cup caster sugar
- 1 1/2 cups milk
- 1 1/2 cups boiling water
- 2 teaspoons butter, softened
- pure icing sugar and double cream or ice-cream, to serve

### Step 1

Preheat oven to 180°C. Lightly grease an 8-cup capacity ovenproof bowl or pudding bowl.

### Step 2

Sift flour and 2 tablespoons cocoa into prepared bowl. Stir in 1/2 cup sugar. Add milk. Stir until well combined.

### Step 3

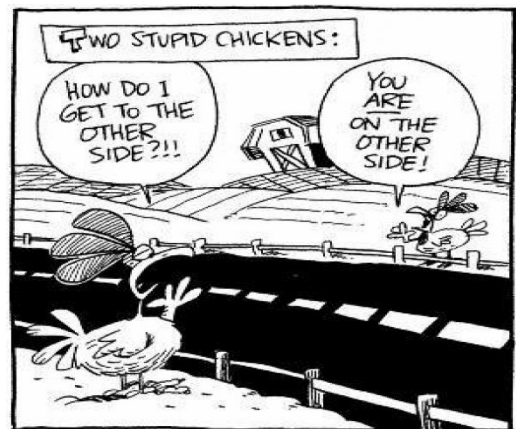
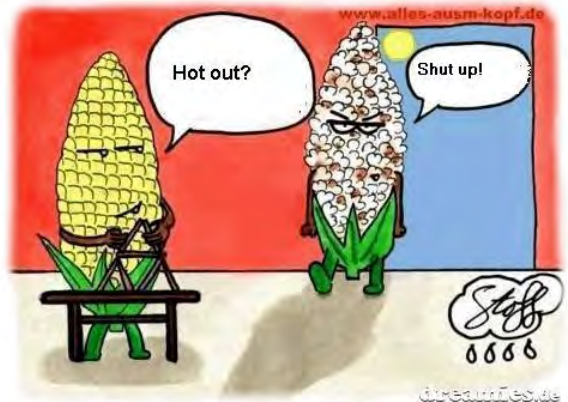
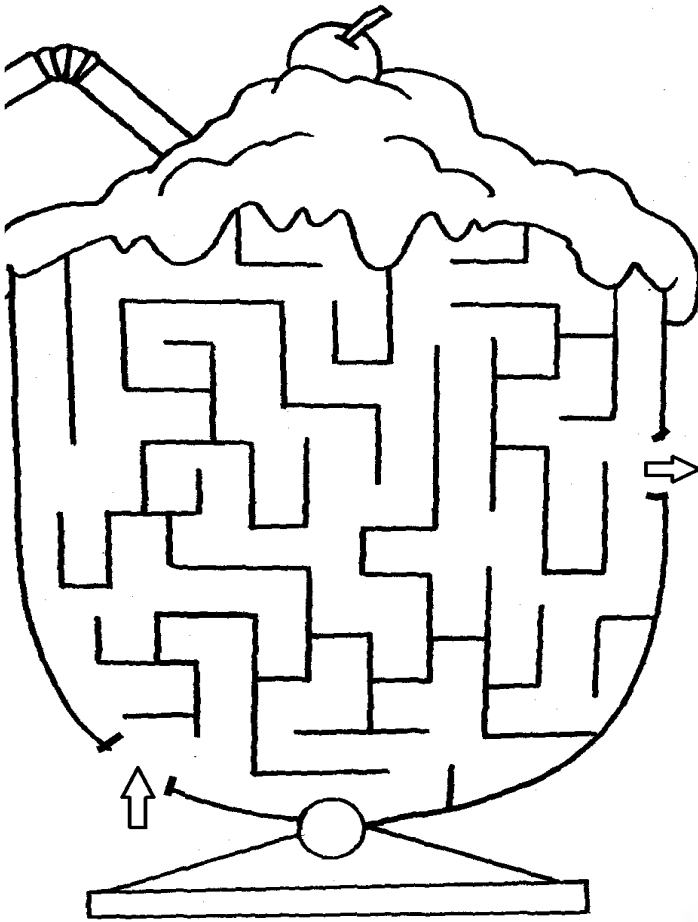
Combine remaining 1/2 cup sugar and 1 tablespoon cocoa in a small bowl. Sprinkle over surface of pudding. Gently pour boiling water over the back of a large metal spoon to cover surface of pudding. Dot with butter. Bake for 35 to 45 minutes or until a skewer inserted into the centre comes out clean.

### Step 4

Dust with icing sugar and serve with double cream or ice-cream.

Have you got a recipe you want to share? Bring it in, give us a call or send an email—  
[admin@cue.wa.gov.au](mailto:admin@cue.wa.gov.au)

# Kids CORNER



WHAT DO YOU GET IF YOU  
CROSS A CENTEPIEDE AND A  
PARROT?

A WALKIE TALKIE

WHERE DO COWS GO ON THEIR  
HOLIDAYS?

MOO YORK!

WHAT DID ONE WALL SAY TO  
THE OTHER WALL?

MEET ME AT THE CORNER

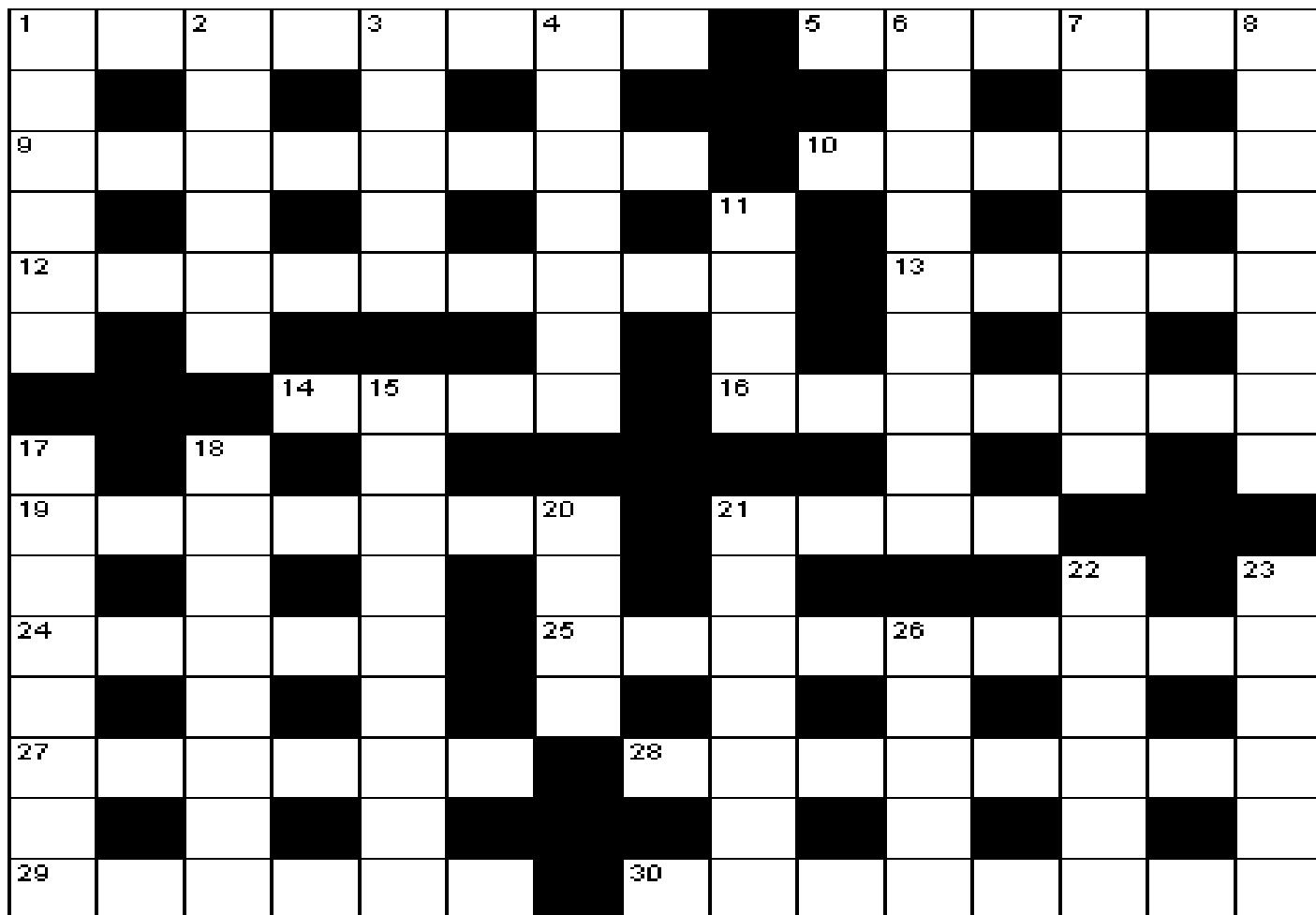
WHAT STARS WEAR GLASSES?

FILM STARS





# Puzzles



## Down

1. Extremely cold (6)
2. Keep busy with (6)
3. Whatever person (archaic) (5)
4. Post-mortem examination (7)
6. Obese (9)
7. Sexual (8)
8. A tobacco poison (8)
11. Sprouts (4)
15. Spiritual (9)
17. The Muse of epic poetry (8)
18. Locomotive driver (8)
20. Street (4)
21. It takes the place of a noun (7)
22. Inhumane (6)
23. Superficiality (6)
26. Go by car (5)

## Across

1. Shoes etc (8)
5. Activity (6)
9. Imperfectly formed (8)
10. North Pole area (6)
12. Spontaneously (9)
13. Not fulfilled (5)
14. Wear away by rubbing (4)
16. Sugarcoat (7)
19. Ring-shaped (7)
21. Compassion (4)
24. Prevaricating (5)
25. Dodging (9)
27. Leopardlike cat (6)
28. Home (8)
29. Exit (6)
30. Give rise to (8)



	8				3	6	1	
	4					5		
	6		2		7	3		
	5	8		1		4		
		6		7	9			
9			4					
					6			1
3				2			6	
			7				8	

# Solutions

A	L	G	A		A	N	G	E	L		S	P	A	S
D	I	A	L		R	O	U	G	E		C	U	L	T
D	I	S	T	O	R	T	I	O	N		A	B	L	E
S	I	P		V	E	R	B		G	A	L	L	O	P
			C	A	S	E		S	T	R	A	I	T	S
I	M	P	A	R	T		O	T	H	E	R	S		
S	A	U	R	Y		P	A	R	E	S		H	A	T
L	I	L	T		A	R	S	O	N		P	E	R	I
E	N	S		S	T	E	E	P		H	O	R	S	E
		A	B	A	T	E	S		B	O	S	S	E	D
B	E	T	O	K	E	N		B	L	U	E			
A	R	I	S	E	N		A	L	A	R		P	E	N
L	A	O	S		D	I	V	A	R	I	C	A	T	E
E	S	N	E		E	R	O	S	E		U	R	N	S
S	E	S	S		D	E	N	T	S		B	R	A	T

9	6	7	1	3	2	8	4	5
4	3	8	6	5	7	1	2	9
1	2	5	8	9	4	7	6	3
7	9	4	5	2	6	3	8	1
2	1	6	9	8	3	5	7	4
8	5	3	7	4	1	2	9	6
5	7	9	3	6	8	4	1	2
6	4	1	2	7	5	9	3	8
3	8	2	4	1	9	6	5	7



Victoria Street  
Cue WA 6640  
Tel: 9963 0100



### March 2015

R.F.D.S GP Clinic	10 & 24th
Child Health Nurse	5th & 19th
Podiatrist	2nd March
Physiotherapist	9th March
Occupational Therapy	Please enquire
Home and Community Care	Twice Weekly
Psychologist	Please enquire

### Visiting Schedule 1st quarter 2015

Meekatharra	3rd Feb 2015	to	12th Feb 2015
Mt Magnet	24th Feb 2015	to	5th March 2015
Yalgoo	17th March	to	26th Mar 2015
Meekatharra 99810640			
Yalgoo Primary School 99628029			
Mt Magnet, Cue, Sandstone 0427386647			

Please enquire as the dates are subject to change

# WHAT DO YOU WANT?

What would you like to see in next months Dryblower?

- More Recipes?
  - Classifieds?
  - More puzzles?
  - Jokes?
  - A photography section for locals to submit their own photographs?
  - Have you got a small message you want published? Send it in!
- We want your ideas! By sending us an email or dropping in we can do our best to keep the community interested and updated. Call in to the Cue CRC.



AMBULANCE  
POLICE  
FIRE BRIGADE

PHONE: **000**

FOR AFTER HOURS NURSE

PHONE: 99630100

**DO NOT**

VISIT THE NURSE AT HOME

**REMEMBER RING: 99630100**



# MARCH 2015



The view over looking Lake Austin

Sun	Mon	Tue	Wed	Thu	Fri	Sat
<b>1</b>	<b>2</b>	<b>3</b>	<b>4</b>	<b>5</b>	<b>6</b>	<b>7</b>
<b>8</b>	<b>9</b>	<b>10</b>	<b>11</b>	<b>12</b>	<b>13</b>	<b>14</b>
<b>15</b>	<b>16</b>	<b>17</b>	<b>18</b>	<b>19</b>	<b>20</b>	<b>21</b>
<b>22</b>	<b>23</b>	<b>24</b>	<b>25</b>	<b>26</b>	<b>27</b>	<b>28</b>
<b>29</b>	<b>30</b>	<b>31</b>				

*Lake Austin : Cue*

*Photo: Ruth Lee*