

The Dryblower

November 2018, Issue 61



Septembers full moon rising over the water tanks



***THIS PUBLICATION MAY, COULD, MIGHT, HAS OR WILL
OFFEND SOME PEOPLE.***

*Take life choices seriously.
Err on the side of caution and smile =)
Take a risk and laugh your head off.*



KEEPING YOU INFORMED OF WHAT IS HAPPENING IN THE CUE COMMUNITY WITH

The Dryblower.

THE DRYBLOWER IS A NON-PROFIT COMMUNITY NEWSPAPER EDITED, PRINTED,
PRODUCED AND DISTRIBUTED BY THE CUE CRC.

Distribution Outlets for the Dryblower

This publication is not produced by the Cue Shire and therefore any complaints /articles should be directed to the Editor or the Cue CRC.

- ◆ Bell & co, Cue Shire, Cue CRC
- ◆ Queen of the Murchison B&B
- ◆ Murchison Club Hotel
- ◆ Cue Caravan Park

All editions of the Dryblower are available electronically from either

cue.crc.net.au or cue.wa.gov.au

Want to share something ?

| Size | B/W | Colour |
|--------------|---------|---------|
| Full page | \$30.00 | \$60.00 |
| Half page | \$15.00 | \$30.00 |
| Quarter page | \$10.00 | \$20.00 |
| Eight page | \$5.00 | \$10.00 |

All Advertising rates are incl. of GST

Unable to collect your copy ?

Simply complete the form below and send it with your remittance to:

EDITOR
"THE DRYBLOWER"
CUE CRC

Name.....

Postal Address.....

Date:.....

Subscription:.....\$24. 00 for 1 Year

Subscriptions are for a 12 month period

Disclaimer

The information in this publication is of a general nature and does not necessarily reflect the views of the CRC or its employees. While the editor will attempt to publish all contributions submitted, I reserve the right to edit or refuse to publish any contributions which may be considered defamatory or inappropriate. No liability shall be incurred by the editor for any omissions or errors in published articles and contributions.

Contact

CRC 72 AUSTIN STREET, CUE

P O Box 83 CUE

PHONE: (08) 9963 1198

FAX: (08) 9963 1197

EMAIL: CUE@CRC.NET.AU

Contributions, articles and advertisements must be dropped in, posted, faxed or emailed to Cue CRC by the last week of the month for publication on the 7th of the following month.

Disclaimer.

The information in this publication is of a general nature and does not necessarily reflect the views of the CRC or its employees.

While the editor will attempt to publish all contributions submitted, I reserve the right to edit or refuse to publish any contributions which may be considered defamatory or inappropriate. No liability shall be incurred by the editor for any omissions or errors in published articles and contributions.



Hello good people of Cue

Once again I find myself in a position where emotions of grief and sorrow overtake my writing, with October marking the passing away of Ollie George.

I was privileged enough to meet this lovely man about 30 years ago in Mt Magnet where he was working on the shire. I don't remember ever seeing this fella angry, always a quiet and pleasant conversation, always a smile and never any shortage of manners.

A very amiable man who always found a happy resolution to any obstruction he came across, a man who was a true horseman, and a man always committed to doing what he could for his family. He will be sadly missed by many.

RIP Ollie George.

Jeff

The content of this editorial does in no way reflect the views or opinions of the Shire of Cue, its councillors or any of its staff. Responsibility for the information and views expressed in this editorial lies entirely with the author.

FROM THE DESK OF THE CEO

The November meeting of Cue Parliament will have come and gone by the time of this publication and I commend the effort of so many Local, State and Federal representatives on making time in their busy schedules to attend. It was particularly gratifying to see members of parliament taking an interest in the issues affecting our region, including the Minister for Local Government; Heritage; Culture and the Arts, Hon. David Templeman MLA, who had the opportunity to visit the Community and Visitor Centre for the first time since presenting the awards won by the facility at the WA Heritage awards in March.

Thank you to all those individuals and organisations that paid their rates and/or charges in full by the due date. The rates incentive draw was conducted at the October Council meeting. Congratulations to the winners:

\$600 first prize – Cue Primary School

\$300 second prize – Kingstown Holdings Pty Ltd

\$100 third prize – D L Kingston

The advent of warmer weather means ideal breeding conditions for mosquitoes. Fogging operations will be undertaken periodically when weather conditions allow, however all members of the community have a role to play in controlling this pest. Shire Environmental Health Officer, Bill Atyeo, has included a guide for householders in this publication.

Warmer weather also means that recreational activities are best undertaken in the cool of the night. To allow for this, the lights at the basketball courts have been re-activated to come on automatically around 7pm every night and remain on for two hours. Lights have also been installed at the new bowling green. It is hoped that there will be enough interest to hold regular barefoot bowls competitions throughout the year.

Repairs to the remainder of the Beringarra-Cue road to the Shire's Western boundary are almost complete, with Bitutek engaged to seal the final 45 kilometres. Bitumen spraying is currently under way. If you are out this way, please slow down and obey all traffic signs to ensure the safety of workers.

Amendments to the *Bush Fires Act 1954* have been implemented will enable the Shire to deal with breaches of Total Fire Bans by issuing \$1,000 infringement notices. Total Fire Bans are declared by the Department of Fire & Emergency Services, usually for one day, when weather conditions create the potential for devastating bushfires.

Upcoming events:

- Remembrance Day – Sunday, 11 November 2018.
- Seniors Week 11-18 November 2018 (morning tea 15 November).
- Volunteers Night – Wednesday, 5 December 2018.
- Town Christmas Party – Saturday, 8 December 2018.

Rob Madson

Chief Executive Officer, Shire of Cue

Next Council meeting - 6:30pm Tuesday 20 November 2018

Cue Shire and local student in an exciting Workplace Learning partnership!

Exciting times exist for a local Cue student! The School of Isolated and Distance Education (SIDE), which is an innovative online school and the Cue Shire are involved in an exciting on-the-job training partnership. The Authority Developed Workplace Learning (ADWPL) program is the initiative in which local Year 11 student, Brad Lacy, is using to explore his career goals.

The beauty of the programs is that it is also linked to helping Brad achieve Secondary School Graduation (WACE) ... so it's a win, win situation all round.

ADWPL is a program where students can access the world of work exploring different career paths and developing key core employability skills that make them very competitive in the employment / training market.

Evidence gathered from the Mitchell Institute in connecting the worlds of education and work state:

- All Australian students should experience the world of work before finishing school.
- School-industry partnerships deliver many benefits such as:
 - * Improving the transition from school to the workforce.
 - * Brings communities closer together and increases national productivity.
 - * Grows skilled people for emerging jobs.
 - * Exposes students to different career possibilities inspiring them to achieve their career goals.

The support of local youth by the Cue Shire "is *fantastic*" says workplace-learning coordinator Shane Murray. The Shire is at the leading edge in offering high school students an exciting and relevant training option and should be held up as a role model for other regional towns to follow this lead.

The school-to-work program has many hidden advantages to all stakeholders ... students, parents, the school and community. Shane, along with the Lacy family would like to say thank you to the Shire of Cue for their commitment to local youth. This leadership and support is to be highly commended!

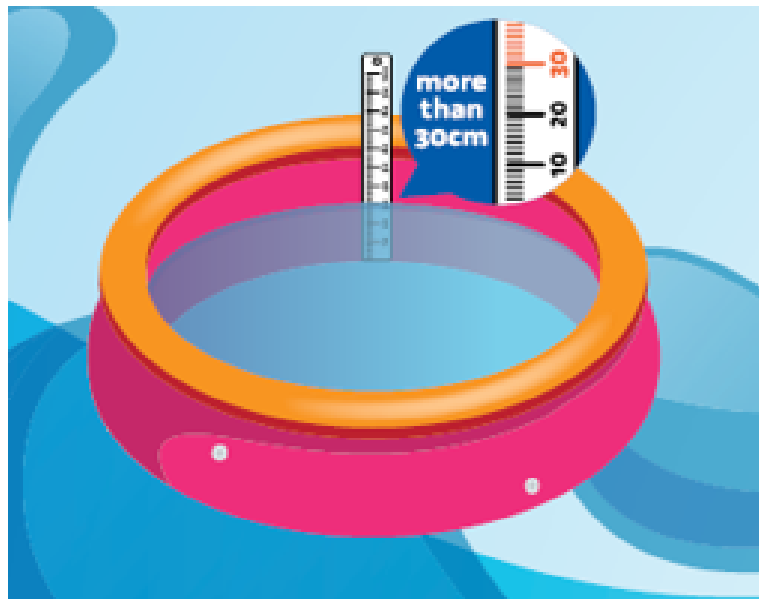


Brad Lacy at the start of his working day at the Cue Shire Works depot.



Brad proudly displaying his ADWPL log book. Keeping an evidence journal of his work activities is a critical aspect of the school-to-work program.

Rules for Portable Pools



Any pool that is designed for swimming, wading and paddling that contains water more than 30cm deep (the length of one ruler), must be enclosed by an effective safety barrier that complies with the laws. It must also be registered with the Shire of Cue.

Young children can drown in portable pools in a matter of seconds if left unsupervised

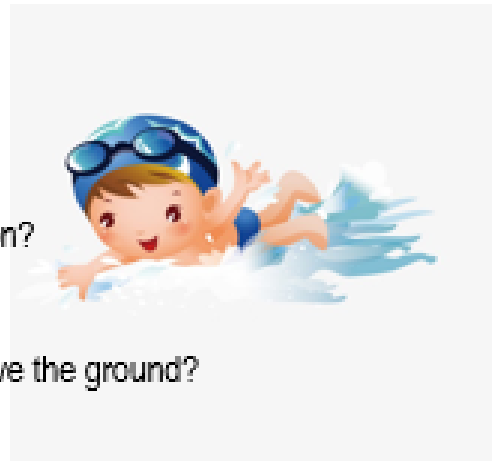
HELP SAVE YOUNG LIVES IN AND AROUND WATER

- ✓ Never prop a pool gate open.
- ✓ Ensure you always actively supervise children within arm's reach whenever they are in, or around the water regardless of how much water is in the pool.
- ✓ Never rely on older children to supervise younger children, no matter how confident you are about their ability.
- ✓ For smaller pools ensure they are emptied and stored safely away from young children after use.
- ✓ Ensure the pool cannot fill with rainwater or water from sprinklers
- ✓ Ensure the barrier is clear of climbable objects.

For more information: www.dmirs.wa.qov.au/portable-pool

Check the pool gate

- Does the pool gate close by itself from any open position?
- Does the gate have a self-latching device?
- Does the gate open away from the pool?
- Is the latch release mechanism at least 1.5 metres above the ground?



Check the pool fence

- Is the fence fixed securely in place?
- Is the outside of the fence at least 1.2 metres high?
- Are all vertical uprights in the fence spaced less than 10cm apart?
- Is there at least 90cm between handholds and footholds?
- Is the bottom of the fence 10cm or less from the ground?
- Is the surface directly beneath the fence stable and not easily eroded?
- If a boundary fence forms part of the pool safety barrier, is it at least 1.8 meters high?

Check climbable objects

Bbq's, flower-pots, trees, retaining walls, plumbing, cubby houses, toys, outdoor furniture, pool pumps etc. may all help a young child to climb into the pool area.

- Is the pool area clear of any items that would assist a child to climb over the fence or reach the latch on the gate that provides access to the pool area?

Check windows

Is the openable portion of a window that forms part of a safety barrier:

- Permanently restricted to open no more than 10cm by a device that requires the use of a tool to remove it?
- Covered by bars or metal screen, fixed in place by a device that requires the use of a tool to remove it?

Please note that key locks are not considered to be permanent restrictions.

Doors

- Doors with direct access to the pool area require local government approval.
- Pet doors are not permitted.

Some information from the Rules for Portable Pools brochure.

For more information: www.dmirs.wa.gov.au/portable-pool





Mosquito Control – Everyone's Responsibility

Are Mosquitos causing you a problem? If so, then what can be done to limit the numbers found on your property? Apart from fogging (like a large can of fly spray hitting those that are on the wing) done by the Shire it is the responsibility of all the people in town to take steps to limit the numbers. These are not big capital works, but rather small and targeted steps which stop the mosquito breeding in water around houses.

We know the mosquito in numbers is a real nuisance to people and spoils the outdoor living and socializing we all love to do in the summer. We also know that the mosquito is capable of spreading quite serious diseases to us humans and may cause death of the person in severe cases.

Residents can assist with the control of nuisance and disease carrying mosquitoes by making sure the mosquito does not have access to breeding sites on their properties. This can be achieved by;

- Sealing all gaps in lids of all septic tanks and ensure leach drains are completely covered with no access for mosquitoes to breed;
- Vent pipes on all septic tank systems and houses must be fitted with mosquito proof cowls;
- Screen rainwater tanks with insect proof mesh, including inlet, overflow and inspection ports;
- Ensure guttering does not hold water;
- Dispose of all containers which hold water or invert them so that they cannot hold water;
- If you have ornamental ponds, make sure that they are stocked with mosquito-eating fish, e.g. goldfish;
- Keep margins free of vegetation;
- Keep swimming pools well chlorinated and filtered and free of dead leaves;
- Fill or drain depressions in the ground that hold water;
- Empty pot plant drip trays once a week or fill with sand. Empty and clean animal and pet drinking water once a week;
- Some pot plants (such as bromeliads) hold water in their leaf axils. These should also be emptied of water once a week.

One tablespoon of water is capable of breeding 1000 mosquitoes in 7 days.

Residents should also protect themselves from being bitten by mosquitoes by:

- At home screen all doors and windows. Doors should be self-closing and open outwards;
- When camping, screen caravans, tents, swags and other sleeping equipment or use a mosquito net;
- Use repellents containing DEET (50-200g/litre diethyl toluamide) or Picaridin;
- Wear long loose fitting and preferably light-coloured protective clothing;
- Always take protective measures when mosquitoes are prevalent outdoors;
- Recognise and avoid areas of mosquito activity, e.g. wetlands, salt marshes, billabongs, river floodplains, etc.

Reducing mosquito numbers in our community and controlling potential nuisance and disease is everyone's responsibility. If you have any comments or questions on these matters, please contact the Shire.

Office: 9963 8600

Works Department: 9963 1500

Cue CRC Raffle
Drawn by Dr Rowan Carter from GRAMS
at the Cue Nursing Post

1st Prize

Gift from Tupperware Party Arctic Picnic set from Tupperware retail value \$ 200.00



Ticket Purple F 60

Won by: Mal and Maria Taylor

8 Simpson Street Cue WA 6640

2nd Prize

Donated Gold nugget necklace, silver plated chain and backing cross, estimated value \$150.00



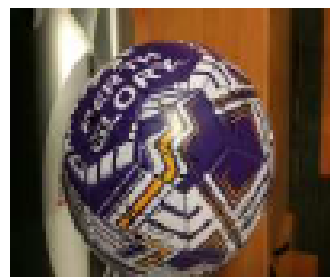
Ticket Black A 05

Won by: Cathy Jones

34 Dowley Street Cue WA 6640

3rd Prize

Donated Perth Glory signed soccer ball estimated value \$50-\$100



Ticket Purple F 31

Won by: Jeff Gregory

Hayden Place Cue WA 6640

Thank You

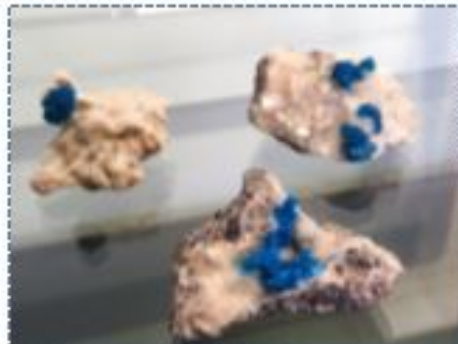
To every one who helped
Mt Magnet Post Office
retain our photo Services
By signing petitions and
writing letters

ALL your identification
services and Passport
Applications can still be
processed in
Mount Magnet



Cue CRC: Our Rock & Roll Collection

The CRC has some amazing displays for everyone to have a browse, some of our locals were generous enough to lend us some of their unique rock collections and another local amazed us with his carpentry skills! Below is just a sneak peak of what we have in our displays.





**Anyone interested in coming
to the swimming pool in
Mount Magnet for Water
Exercise**

**Mondays and Fridays
Starting Friday the 19th
October**

**Contact Ruth Bookings essential
99631198**



**Exercise classes
for beginners
every Thursday
at 5pm**



**Please wear closed in shoes
and bring a water bottle
and a hand towel
thankyou**

Ring the Cue CRC 08 9963 1198
For bookings

NOW OPEN

GOLDEN ART SHOP

Under New Management



Julie's

APPLIQUES

We have heaps of gift ideas available including:

- * gold
- * carved emu eggs
- * personalised items ie; mugs, t-shirts
- * paintings
- * stained glass
- * jewellery



Opening Hours:
Mon - Fri 9am - 5pm
Sat 9am - 12ish



Open

**The Cue CRC book exchange.
Come in and browse the range,
Swap a book or purchase one
by donation**

**Where: the Cue CRC 72 Austin
Street Cue**

Any time while open

Opening hours: 8.30-3.30

Monday to Friday

RECYCLE RECYCLE RECYCLE

The Cue CRC is your local place to RECYCLE your ink cartridges

**Just bring them in and put them in the recycling box, we then
send the full bag to Planet Ark for processing.**

**We have been doing this small bit for the environment for over
7 years, and will continue for as long as we can.**

If you have any other recycling ideas please come and tell us.

**We are located in the Old Post Office building, 72 Austin Street
Cue.**



Department of
Transport

DoT Remote Services will be visiting **Cue**



When: 3rd December 2018 1PM - 3PM

Where: Cue Community Resource Centre - Old Post Office

We will be able to help you with the following services:

- theory test
- photo card applications
- driver's licence applications
- change of address
- registration and driver's licence renewals
- vehicle transfers
- return of vehicle plates
- driving assessments

To enable us to help you, please ensure you bring your birth certificate, Medicare card, bank card and two types of proof of residency, along with cash or card for payment.

For enquiries please call: Karen 9216 8194

Sometimes quicker is better with **DoT Direct**

Whether you're renewing your licence, transferring vehicle ownership or checking your demerit points, **DoT Direct** is quick and easy to use wherever you are.

Start saving time by visiting www.transport.wa.gov.au/dotdirect



Keep up to date with upcoming remote services visits and stories, follow us on Facebook **Department of Transport Regional Services WA** or search **@RegionalServicesWA**



We invite all Boarders of Iona to a
**SPECIAL BOARDERS'
 REUNION**

SATURDAY 24 NOVEMBER 2018
 3.00PM - 6.00PM
 \$30
 COLLEGE GREEN

Bookings are essential at
www.trybooking.com/VWCK

Once an Ionian, always an Ionian



Hi All,

Iona Presentation College is closing its boarding school after 110 years, and are holding a special Boarders' reunion to mark the occasion.

Since many of the Ionian Boarders may still be living in regional western Australia, or friends and relatives know of their current whereabouts, can you please circulate the attached invitation through your networks.

Any enquiries are to go direct to Iona:

**Georgia Allen
 Community Relations and Development
 Iona Presentation College
 Ph: 9285 5269**



Capturing The Beauty In Our Town

- Cue WA



PHOTOS SUPPLIED BY
JESSICA PEARCE



St Patrick's Catholic Church

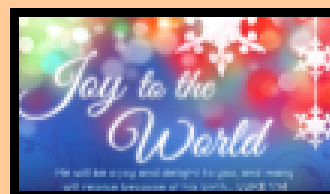


Liturgies November and December

NB change of times

| | | |
|------------|--|----------|
| Sun 18 Nov | Celebration of the Eucharist (Mass) | 08.00 am |
| Sun 25 Nov | Celebration of the Word with Communion | 10.00 am |
| Sun 16 Dec | Celebration of the Word with Communion | 10.00 am |

Tues 25 Dec
Christmas Mass
09.00 am



All Welcome

St Patrick's is located on the corner of Marshall and Dowley Streets.

St Patrick's is under the pastoral care of the Sisters of the Good Samaritan of the Order of St Benedict.

Sr Gerri Boylan sgs 9963 4179



FOR SALE

FOR SALE

\$125,000

OFFICE

Elders Perth
Phone: 9422 2444

AGENT

Greg Smith
0428 486 806

Email:
greg.smith@elders.com.au



23 (Lot 609) Dowley Street CUE

Modern Living in Historic Gold Town

- Spacious and reasonably modern 4 x 2 in a quiet location of this historic township.
- Opportunities to acquire homes of this quality in Cue are not common and the cost of establishing new is quite high.
- Open plan living dining, 4 good sized bedrooms with full ensuite in master.
- Other features include ducted airconditioning, car port, large rear patio, rainwater tanks and garden shed.

Web ID: 19440950

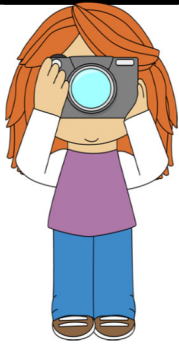


REMEMBRANCE DAY

A short Remembrance Day Service will be held at
AS Gurney Memorial Park,
Austin St, Cue
commencing at 10.45am
Sunday 11 November 2018

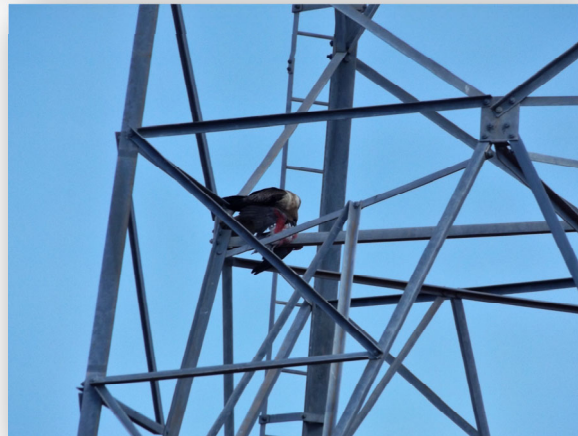
Lest We Forget





After School Kids Activity

On the 24th of October, we hosted an after school kids activity at the CRC just like every other second week. Ruth Lee provided us with yummy homemade sandwiches and we enjoyed many fun games of Bowling, magnetic darts and even a few games of tag. A couple of the kids spotted some birds and were allowed to take turns using the camera.
The kids that attended the kid's activity supply the photos below.



CUE HEALTH CENTRE

Victoria Street
Cue WA 6640
Tel: 9963 0100



Murchison Dental

| | | |
|-----------------------------|---------------|--|
| November 2018 | | For appointments PH: 0427386647 |
| R.F.D.S GP Clinic | 13th and 27th | Meekatharra |
| Podiatrist | 19th | Mt Magnet |
| Physiotherapist | 12th | For appointment 0427386647 |
| ICDC Child Health | 20th 5th | Please enquire as above dates are subject to change |
| Grams | 7th | |
| FLU VAC Have STARTED | | |

AMBULANCE POLICE FIRE BRIGADE

PHONE: **000**

FOR AFTER HOURS NURSE
PHONE: 99630100

DO NOT

VISIT THE **NURSE** , **FIRIES** or **POLICE** AT HOME

**REMEMBER
ALL EMERGENCIES
RING 000**

SUDOKU!

| | | | | | | | | |
|---|---|---|---|---|---|---|---|---|
| | 6 | 5 | | 3 | | 2 | | |
| 2 | | 4 | | | | | | 3 |
| | | | | | | 1 | | |
| | | 1 | 7 | 5 | | | | |
| 8 | | | | | | | | 1 |
| | | | | 4 | 9 | 7 | | |
| | 8 | | | | | | | |
| 1 | | | | | | 8 | | 6 |
| | | 9 | | 1 | | 5 | 7 | |

| | | | | | | | | |
|---|---|---|---|---|---|---|---|---|
| | 9 | 1 | 7 | | | | | |
| | | | | | | | 6 | |
| | | 4 | | | 8 | | | 2 |
| | | | 1 | | | 5 | | 7 |
| 1 | | | | 8 | | | | 9 |
| 2 | | 3 | | | 4 | | | |
| 7 | | | 2 | | | 8 | | |
| | 5 | | | | | | | |
| | | | | | 3 | 4 | 9 | |

| | | | | | | | | |
|---|---|---|---|---|---|---|---|---|
| | | | | 4 | | 5 | | |
| | 9 | | | | | | | 2 |
| 5 | | | | | | | | 1 |
| | 8 | 9 | | 4 | 5 | 3 | | |
| | | 3 | | | | 8 | | |
| | | 5 | | 7 | 8 | | | |
| | | | 2 | | | | | |
| | | 7 | 1 | | | 4 | | 6 |
| 1 | | | | 3 | | | 7 | |

| | | | | | | | | |
|---|---|---|---|---|---|---|---|---|
| | 6 | 5 | | 3 | | 2 | | |
| 2 | | 4 | | | | | | 3 |
| | | | | | | | 1 | |
| | | 1 | 7 | 5 | | | | |
| 8 | | | | | | | | 1 |
| | | | | 4 | 9 | 7 | | |
| | 8 | | | | | | | |
| 1 | | | | | | 8 | | 6 |
| | | 9 | | 1 | | 5 | 7 | |

| | | | | | | | | |
|---|---|---|---|---|---|---|---|---|
| | 9 | | 1 | | | 3 | | |
| | 1 | | | 6 | | | 2 | 4 |
| 7 | | | 3 | 8 | | | | |
| | | | | | | 4 | | 6 |
| | 8 | 3 | | | | 1 | 9 | |
| 2 | | 7 | | | | | | |
| | | | | 9 | 3 | | | 5 |
| 6 | 7 | | | 2 | | | 8 | |
| | | 9 | | | 4 | | 6 | |

| | | | | | | | | |
|---|---|---|---|---|---|---|--|--|
| S | | | | | | | | |
| P | U | Z | Z | L | E | | | |
| | | D | | | | | | |
| | | | O | | | | | |
| | | | | K | | | | |
| | | | | | | U | | |

Geraldton Greenough

FINANCIAL SERVICES

Servicing throughout the Mid West

- Financial Planning
- Superannuation Advice
- Estate Planning
- Insurance and Risk Management
- Pre and Post Retirement Planning
- Aged Care & Centrelink
- General Insurance – Specialising in Business & Farm Insurance, including Crop Insurance

Contact us for obligation free quotes:

www.ggfs.com.au

9964 2522

enquiries@ggfs.com.au

Beachcroft Holding Pty Ltd T/As Geraldton Greenough Financial Services (AFSL: 250 286) are Authorised Representatives of Dover Financial Services Pty Ltd (AFSL: 307 248)

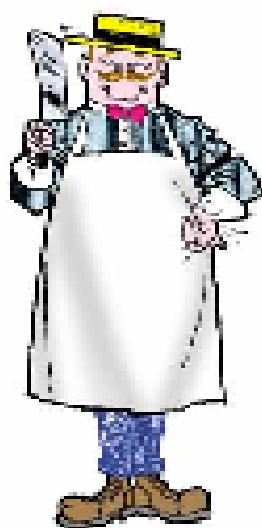


Jose-anne Laing 01.11

Jefto Radovanovic 22.11

Graham Morphet 27.11

MT MAGNET MEATS



**The only FRESH
PRODUCE BUTCHER
in the Mid West**

**Phone or Fax your
orders for quicker
pick up
Bulk meat specialist
Quality meat at Perth
prices**

**76 Hepburn St
(Main Street)**

**Phone / Fax
9963 4195**

*Pleased to meet you
with Meat to please you.*

**Mon—Friday
9—5 pm**

**Saturday
9—12 pm**

come on GET MOBILITY

Indigenous Youth Mobility Pathways

WHAT IS THE PROJECT (IYMP)?

The Indigenous Youth Mobility Pathways (IYMP) will give young Indigenous people from regional and remote areas the chance to relocate to Cairns, Toowoomba, Townsville, Rockhampton, Perth, Darwin and Adelaide to access the training and employment opportunities available there, including Australian Apprenticeships, University courses and accredited courses delivered by TAFE and other Registered Training Organisations. Once the young people have developed their skills they will be supported to take up employment either in their home communities or elsewhere.

THE IYMP SERVICES CAN ASSIST PARTICIPANTS WITH:

- Training and Employment Support Services
- Career Planning
- Culturally Supported Accommodation
- Life Skills
- Personal and Professional Development

WHO CAN APPLY?

To be eligible you should:

Be an Aboriginal or Torres Strait Islander person between the ages of 16 - 24; Have support from your family/community to relocate to access education and training opportunities. Must be willing to commit to a career pathway.

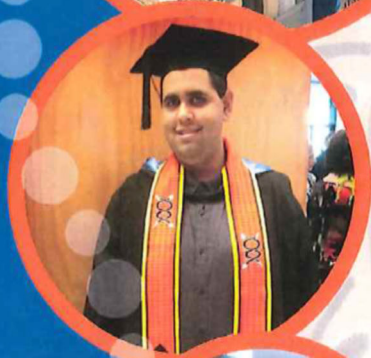
HOST LOCATIONS

| | | | |
|-------------|--------------|----------|--------------|
| Cairns | 07 4051 2212 | Darwin | 08 8945 5082 |
| Townsville | 07 4721 4822 | Adelaide | 08 8336 2525 |
| Rockhampton | 07 4927 7112 | Perth | 08 9356 9637 |
| Toowoomba | 07 4687 7196 | | |

Visit our website: www.iymp.com.au

IYMP

INDIGENOUS YOUTH
MOBILITY PATHWAYS



CAREER
EMPLOYMENT
AUSTRALIA



Australian Government

Department of the Prime Minister and Cabinet

Cue Heritage Project 2018

Hi everyone, I am currently working on a heritage project for Cue, which involves a couple of stages. The first is the building of a Heritage Discovery Centre in the back of the Post Office Building. This facility will allow us to house the archival material held in Cue (including old mining claims books, vaccination registers, burial records, and rate books for the Road Board). We will also be able to display some of our wonderful artefacts, with signage explaining their connection to Cue and their story.

The second part of the project involves using some fantastic technology to bring Austin St back to life as it was in 1900, using virtual reality. You will be able to listen to audio files of stories about Cue, hold up your phone and see photos of buildings used to look like or put on a headset and see the teamster wagon drive up Austin St to make a delivery!

As part of this project, we have heritage consultants coming to Cue to help us catalogue and assess our collection of artefacts. They will also be helping us develop a strategy for displaying, and management of these items going forward so that they are here for generations to come.

I am aware that there may be people in the community who are storing items on behalf of the town, or may have interesting items with a wonderful story and connection to Cue. I would ask people to come see me at the CRC, and share their stories about our heritage and the artefacts that are being safely stored so that we may add them to the catalogue list and perhaps display them for visitors to see.

We have an opportunity to really put our fascinating history on display for everyone to share in, and it would be wonderful to bring everything back together again—with the whole town sharing in that story. See you at the CRC!!

Janet





Yes, the rumours are true, it could be coming back!

We are currently exploring bringing QFest back in 2019.

We are looking for enthusiastic people to become part of a committee to help explore the potential of bringing QFest back to life, and supporting the community in executing the planning required to make it an event to remember!

If you are interested in supporting the return of this fantastic festival, please let me know.

**You can email jlwicks@iinet.net.au
Call me on 0439884427**

Janet

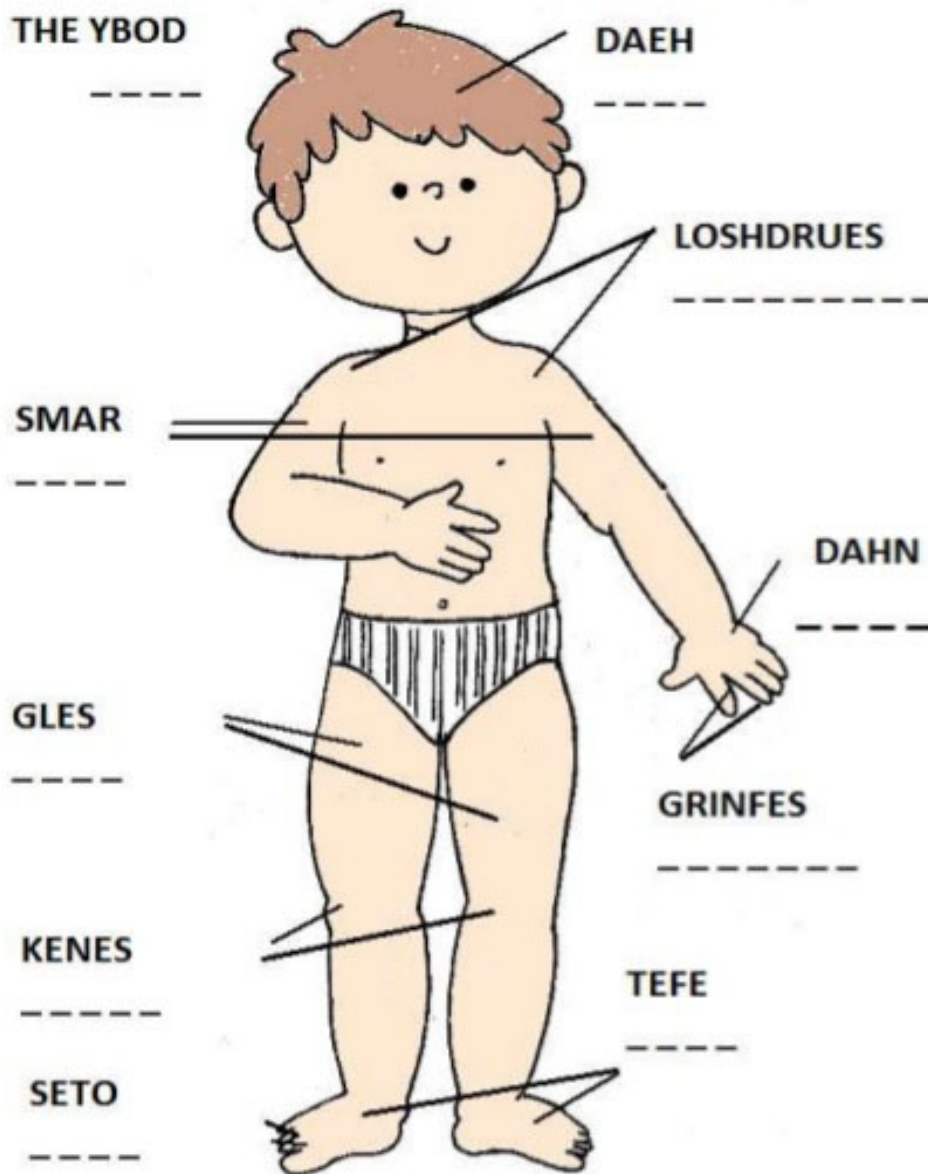


JUST FOR KIDS

The Human Body

Let's do some practice!

Activity: Look at the picture and put the letters in the correct order to form the parts of the body.



What do little
witches do
after school?



Their gnomework!

Why do spiders
make good
baseball players?



They know how
to catch flies!

What kind of
music do
mummies like?



WRAP music!

Who did
Frankenstein
take to the
dance?



His ghoulfriend!

Why did the black
cat put oil
on the mouse?



Because it was
squeaking!

What does a
vampire take for
a bad cold?



Coffin
drops!

What do
witches get
at hotels?



Broom service!

What kind of
shoes do
ghosts wear?



Boooooooooots

HAPPY HALLOWEEN

Decorate your pumpkin!



WORD SEARCH

D W H F N V D S J C J E I X F
T U T H D E C A F A Q M B Q N
O F X W T A E C U N L U R A K
X T O N R T J W A D V T A Q G
I G U Y V D R E O Y F S S K S
P A R A D E Y P W L H O Q S L
H M C O X T U I H P L C I A O
N T V S M G T S O H G A T M Q
T A E R T R O K C I R T H I V
W S G O I U X B B Q P L X Y W
H P Y L X Q N D L Z F O W N Q
J P G B I W Z K C I R K W V K
Y L T B C B B V S I N Z Z W L
B O S H V A S L J B M A I L V
T A Y V P K H P B T G E I I J

| | | |
|----------------|-----------|---------|
| CANDY | COSTUME | GHOST |
| GOBLIN | HALLOWEEN | HAUNTED |
| MASK | PARADE | SCARY |
| TRICK OR TREAT | WITCH | |

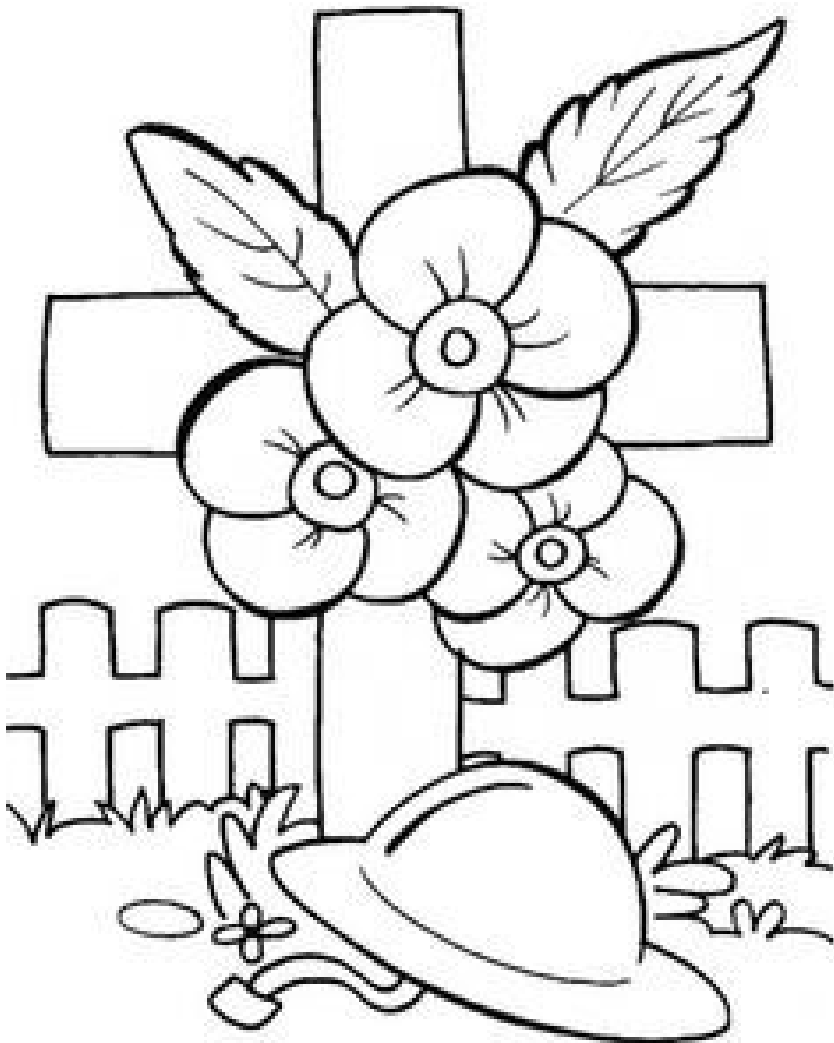
How many words can you make from

TRICK OR TREAT



Design a Medal for Remembrance Day

Many veterans wear medals with pride on Remembrance Day, but not all who serve are awarded medals.
Can you design a medal? What could it be awarded for?



No matter
WHERE
you are...

WHO
you are...

Or **WHAT**
you do...

It's
NEVER
ok to
BULLY

5 Ways to Handle a Bully





WHAT'S YOUR HALLOWEEN NAME?



FIRST LETTER OF FIRST NAME

| | |
|---------------|-------------|
| A. Frightful | O. Dark |
| B. Spooky | P. Chilling |
| C. Spiky | Q. Bubbling |
| D. Eerie | R. Savage |
| E. Spellbound | S. Wicked |
| F. Scary | T. Tragic |
| G. Petrified | U. Menacing |
| H. Ghostly | V. Sticky |
| I. Howling | W. Gross |
| J. Freaky | X. Cursed |
| K. Deadly | Y. Haunted |
| L. Bloody | Z. Gruesome |
| M. Creepy | |
| N. Horrifying | |



LAST LETTER OF LAST NAME

| | |
|--------------|---------------|
| A. Spider | O. Pumpkin |
| B. Blood | P. Spider |
| C. Curse | Q. Potion |
| D. Wizard | R. Mummy |
| E. Skull | S. Vampire |
| F. Ghoul | T. Gravestone |
| G. Eyeball | U. Goblin |
| H. Brew | V. Troll |
| I. Witch | W. Monster |
| J. Shadow | X. Wolf |
| K. Skeleton | Y. Bat |
| L. Booger | Z. Broomstick |
| M. Nightmare | |
| N. Tombstone | |

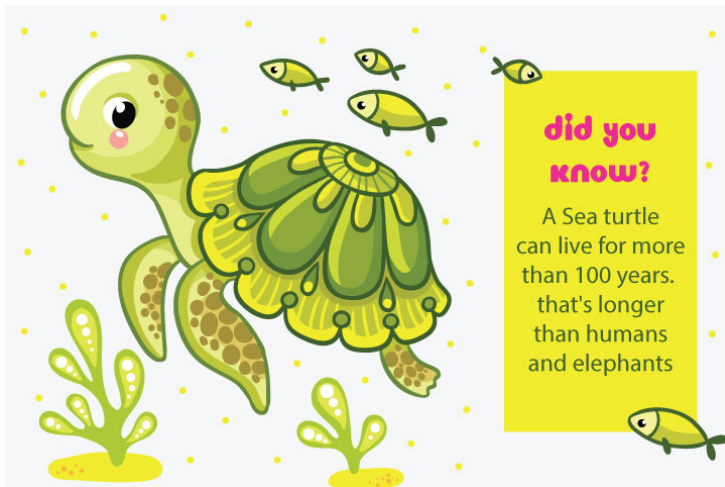


BIRTH MONTH

January. = Angel
 February = Elf
 March. = Unicorn
 April. = Reindeer
 May. = Pixie
 June. = Genie
 July. = Fairy
 August. = Butterfly
 September = Mermaid
 October. = Princess
 November. = Wizard
 December. = Santa

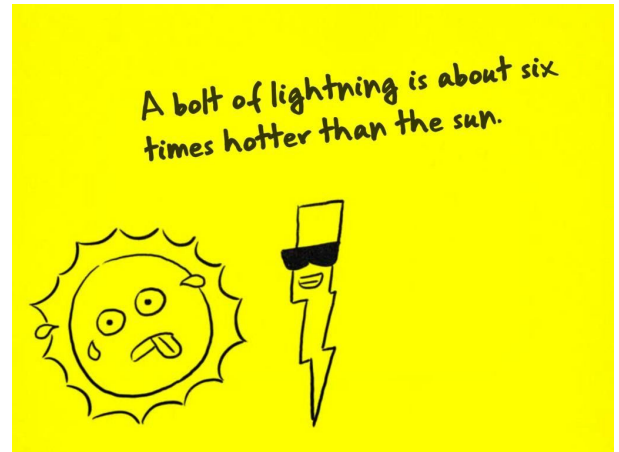


Fun Facts For Kids!



did you know?

A Sea turtle can live for more than 100 years. that's longer than humans and elephants



A bolt of lightning is about six times hotter than the sun.

Hummingbirds are the only birds that can fly backwards and their wings can beat at up to 80 times per second.



Do You Know?

THERE ARE
Over 264 Species
Of
Monkeys



The left side of your body is controlled by the right side of your brain, while the right side of your body is controlled by the left side of your brain.

Water ,Water –Everywhere!



- Water exists in almost every substance ,you eat or drink.
- Milk-90%
- Bread-30%
- Meat-75%
- Egg-73%
- Cucumber-95%,
- Lettuce -95%,
- Tomato-95%,
- Potato-75%

NOVEMBER

| SUNDAY | MONDAY | TUESDAY | WEDNESDAY | THURSDAY | FRIDAY | SATURDAY |
|------------------------------|--|---------|-----------|---------------|-----------------------------|--|
| | | | | 1 Circuit | 2 Swimming Exercises | 3 |
| 4 | 5 Swimming Exercises DOT coming to Cue Centrelink in Cue | 6 | 7 | 8 Circuit | 9 Swimming Exercises | 10 |
| 11 Remembrance Day | 12 Swimming Exercises | 13 | | 15 Circuit | 16 Swimming Exercises | 17 |
| 18 | 19 Swimming Exercises | 20 | 21 | 22 Circuit | 23 Swimming Exercises | 24 IONA special boarders reunion |
| 25 | 26 Swimming Exercises | 27 | 28 | 29 Circuit | 30 Swimming Exercises | |

DECEMBER

| | | | | | | |
|---|----------------------------|---|---|--------------|----------------------------|---------------------------------|
| | | | | | | 1 |
| 2 | 3 Swimming Exercises | 4 | 5 | 6 Circuit | 7 Swimming Exercises | 8 Town Christmas Party |