

The Dryblower



December 2018, Issue 62



Thanks to Amy from Nallan for capturing more of the incredible “beauty to behold” in our magnificent Murchison region.



***THIS PUBLICATION MAY, COULD, MIGHT, HAS OR WILL
OFFEND SOME PEOPLE.***

*Take life choices seriously.
Err on the side of caution and smile =)
Take a risk and laugh your head off.*



Keeping you informed of what is happening in the Cue Community with **The Dryblower.**

The Dryblower is a non-profit Community newspaper edited, printed, produced and distributed by the Cue CRC.

Distribution Outlets for the Dryblower

This publication is not produced by the Cue Shire and therefore any complaints /articles should be directed to the Editor or the Cue CRC.

- ◆ Bell & co, Cue Shire, Cue CRC
- ◆ Queen of the Murchison B&B
- ◆ Murchison Club Hotel
- ◆ Cue Caravan Park

All editions of the Dryblower are available electronically from either

cue.crc.net.au or cue.wa.gov.au

Want to share something ?

Size	B/W	Colour
Full page	\$30.00	\$60.00
Half page	\$15.00	\$30.00
Quarter page	\$10.00	\$20.00
Eight page	\$5.00	\$10.00

All Advertising rates are incl. of GST

Unable to collect your copy ?

Simply complete the form below and send it with your remittance to:

Editor
"The Dryblower"
Cue CRC

Name.....

Postal Address.....

Date:.....

Subscription:.....\$24. 00 for 1 Year

Subscriptions are for a 12 month period

Disclaimer

The information in this publication is of a general nature and does not necessarily reflect the views of the CRC or its employees. While the editor will attempt to publish all contributions submitted, I reserve the right to edit or refuse to publish any contributions which may be considered defamatory or inappropriate. No liability shall be incurred by the editor for any omissions or errors in published articles and contributions.

Contact

CRC 72 Austin Street, Cue
P O Box 83 Cue

Phone: (08) 9963 1198

Fax: (08) 9963 1197

Email: cue@crc.net.au

Contributions, articles and advertisements must be dropped in, posted, faxed or emailed to Cue CRC by the last week of the month for publication on the 7th of the following month.

Disclaimer.

The information in this publication is of a general nature and does not necessarily reflect the views of the CRC or its employees.

While the editor will attempt to publish all contributions submitted, I reserve the right to edit or refuse to publish any contributions which may be considered defamatory or inappropriate. No liability shall be incurred by the editor for any omissions or errors in published articles and contributions.



From The CRC’;

As we are all aware 2018 is coming to an end, with 2019 just around the corner the Editor, Committee and Staff would like to wish everyone a safe and joyful Christmas and new year.

We would like to say a big well done to all of our local business’ including the Shire and Shire workers for keeping the town well maintained all year round. We would also like to say a big thank you to all the volunteers that have taken the time to help the community throughout the year, without your help it was not possible for us to deliver such high quality work in a limited period of time.

On a more serious note, If you are going away during the Christmas holiday please make certain your car is correctly serviced and is road worthy, we cant afford to take any risks and lose any lives especially during this time of the year. This season is known as the “Silly Season” which means people are usually in a hurry to get to places and not taking the safety of others seriously, especially speeding, drink driving, drug use, using the phone while driving and not being properly secured by a seatbelt.

We look forward to making new exciting memories and experiences for the next year and we wish you all a Merry Christmas and a Happy New Year from all of us at the CRC.



The content of this editorial does in no way reflect the views or opinions of the Shire of Cue, its councillors or any of its staff. Responsibility for the information and views expressed in this editorial lies entirely with the author.

FROM THE DESK OF THE CEO

Thank you to everybody that contributed to my fund raising effort for Movember, helping me reach my target of \$1,000 for men's health. On the final day the Movember Foundation called for moustaches to be worn at half-mast (half a mo) and Janelle helped by providing some colour.



The annual Thank a Volunteer barbecue will be held in the beer garden of the Murchison Club Hotel on International Volunteers Day, Wednesday 5 December. Volunteers of any community group or service organisation resident in Cue will be rewarded for their contribution to the community with free dinner, refreshments and entertainment provided by guitarist/singer Emmet.

Get into the spirit of Christmas and dress up your property for the chance to win cash prizes. Decorations don't have to be lights, but the more colour the better. Entry forms are available from the Shire office, with winners to be selected on Tuesday 18 December after the Council meeting.

The Cue Community Christmas Party will be held on Saturday 8 December in the Shire Hall, commencing at 5:45pm. Food and refreshments will be provided. Santa is expected to arrive at 7pm.

The Shire office will close at 12 noon on Wednesday 19 December for the annual Christmas shut down. The office and depot will both re-open on 3 January 2019. During this period I will spend time with my family in Tasmania and hope that everybody has an enjoyable Christmas.

Upcoming events:

- Volunteers Night – Wednesday, 5 December 2018.
- Town Christmas Party – Saturday, 8 December 2018.

Rob Madson
Chief Executive Officer, Shire of Cue

Next Council meeting - 6:30pm Tuesday 18 December 2018

Improving water quality in the Murchison



Project update – October 2018

Project overview

Water Corporation is progressing a \$16 million program to build water treatment plants in Mount Magnet, Cue, Sandstone and Meekatharra. The new water treatment plants will reduce the naturally high levels of salinity and nitrates in the water and improve scaling and hardness.

Why are we building new water treatment plants?

Community feedback has revealed strong support for improving water aesthetics and reducing nitrate levels.

To address this feedback, two treatment options were considered:

1. Construction of new water treatment plants in each town or
2. Rollout of in-house treatment units in each household (as trialled in Cue in 2016).

Following a review of maintenance and operating requirements for both alternatives, the most feasible treatment option was to build a water treatment plant for each town at existing Water Corporation sites.

How will the new water treatment plants work?

A desalination process called Electro Dialysis Reversal (EDR) will be used at the four water treatment plants. EDR technology has been successfully used in regional towns across Australia to improve water quality conditions, reduce nitrate levels and convert over 90% of the treated water into drinking water. It is currently used at the Wiluna and Yalgoo water treatment plants in the Murchison region.

October 2018 update

We are working with our authorised contractor, Guiders O'Connor to progress the design of the four treatment plants and expect to begin construction of the first plant in mid 2019. Proposed plant designs will be sent to the relevant Shire for comment in early 2019.

Delivery schedule

We will build each water treatment plant in stages, starting in Mount Magnet in mid 2019 and progressing to Cue, Sandstone and Meekatharra. At this stage, we expect all plants to be operational by mid/late 2020.

This schedule has been determined by each town's specific plant requirements and available power supply.

How will the water treatment plants be powered?

Existing Water Corporation assets on the water treatment plant sites will continue to operate using grid power.

As part of our commitment to improved sustainability, solar power and batteries will be installed at all four sites to minimise the amount of additional grid power required to run the new water treatment plants.

While Mount Magnet has sufficient power available to run the new plant, additional solar and battery power is required to operate the EDR technology at the Cue, Sandstone and Meekatharra water treatment plants.

A diesel generator will also be installed at the Cue, Meekatharra and Sandstone sites for additional power support. Sandstone will also receive two new 200kL water storage tanks and a booster pump station to improve their water storage.

Project timeline

Contract awarded
23 August 2018

Detailed design has commenced.

*Delivery schedule confirmed:
Mount Magnet (1), Cue (2),
Sandstone (3) and
Meekatharra (4)*



Construction begins at
first plant
Mid 2019 – Mount Magnet



All plants are operational
All treatment plants
scheduled to be running by
mid/late 2020

Meet the project team

- Steve Greeve – Regional Manager Mid West
- Ian Bierman – Senior Project Manager
- John D'Arcy – Stakeholder Manager Mid West





POLICE BEAT

Traffic

As mentioned previously, the District of Cue is probably one of the most traffic patrolled areas in Western Australia's Mid-west Gascoyne Region, yet we are still issuing speeding and other infringements by the dozen. All this despite the numerous awareness adverts on TV, Radio and Billboard advertising etc.

During this Christmas period in Western Australia, double demerit points for prescribed offences will be applicable between 00:01 am on Friday 21 December 2018 and 23:59 pm on Sunday 6 January 2019.

The prescribed offences throughout this period are as follows:

- Speeding;
- Seatbelt offences pertaining to drivers;
- Driving with a BAC of or above 0.05;
- Presence of prescribed illicit drugs or fail to supply oral or blood sample;
- Contravene a red traffic control signal;
- Contravene a red traffic control arrow; and
- The illegal use of mobile phones

Good people of Cue, please, please take heed of the above and please take your time and keep your wits about you during your travels. Allow plenty of time for your journey and arrive alive during this festive period. If you are intending to have a good drink ensure you have a designated driver and that that driver is aware of his/her responsibilities or leave the car and walk.

Crime

To date Cue has been fortunate that crime has not been too much of an issue for us. We do however continue to have issues when out of towners from other communities visit Cue and mostly due to a lack of respect for the community they are visiting.

During this festive season/school holidays, I ask that all community members remain vigilant and secure your property, house and vehicle at all times. Don't let someone else open your Christmas presents.

We still have issues with persons on motor bikes and quads etc. driving in and around the town site. For goodness sakes we are surrounded by bushland go wild there not in town.

Noisy music and inconsiderate anti-social behavior continue to be an issue when people have parties and/or consume too much alcohol. As people tend to purchase the biggest, brightest and loudest boom boxes they can find these days, the sound seems to reverberate around town and that is not good for shift workers, tourists or persons looking for a quiet life. Spare a thought for others and try to be a good neighbour. Just because you like hearing Tammy Wynette with the bass cranked up and at full volume, doesn't mean that everybody else does. Courtesy towards others does not cost you anything but is priceless.



Community Policing

For those of you who are unaware we at Cue Police have a new Sergeant Officer in Charge, Max Walker.

Max has done several stints as OIC in country positions and will serve this community well with that in mind. Now Cue has three very handsome coppers! Please feel free to say Hi to him in the passing or even feel free to drop in past the station to meet him. Apparently he doesn't bite!

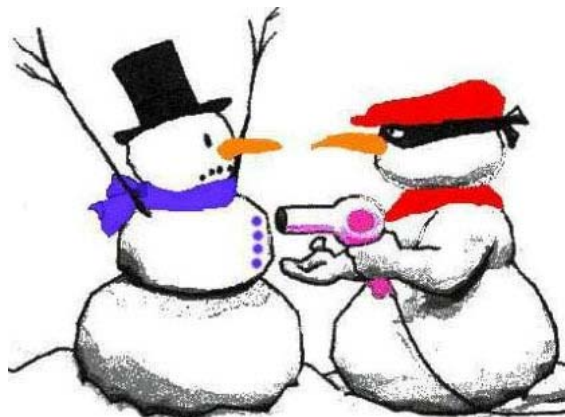
Again I ask that especially due to the time of year that we enjoy ourselves, take care of each other and look out for one another. For some, this time of year may exacerbate the feeling of loneliness or depression and a smiling faced "hello, how are you", maybe all that is required to cheer someone up and if you have a feeling that something isn't right with someone you know, as your gut feelings are often right, don't be afraid to ask "R U OK?"

Please stay safe, enjoy your Christmas break and have a great New Year and best wishes to all from Cue Police.

Quote of the month

"I started with nothing and I still have most of it."

Senior Constable Martin REID
Cue Police Station





SHIRE OF CUE CHRISTMAS CLOSURE DATES

SHIRE OFFICE

The Shire Office will close at 12 Noon on Wednesday 19 December 2018 and will reopen at 9.00am on Thursday 3 January 2019

WORKS DEPARTMENT

The Works Department will close at 12 Noon on Friday 14 December 2018 and re-open at 6.00 am on Thursday 3 January 2019.

RUBBISH COLLECTION DAYS

Rubbish collection days for this period will be as follows:

Tuesday 18 December (commercial only)
Thursday 20 December
Monday 24 December (commercial only)
Thursday 27 December
Monday 31 December (commercial only)
Returns to normal days

EMERGENCY PHONE NUMBERS

Administration 0427 080 205
Works & Services 0472 805 005

**We take this opportunity to wish you a very
Merry Christmas
and a Happy New Year.**



PUBLIC NOTICE

Shire of Cue 2019 Council Meeting Dates

It is advised that under the *Local Government (Administration) Regulations 1996*, Local Governments are required to adopt annual meeting dates and advertise them to the community. As such it was resolved at the Ordinary Meeting of Council held on 20 of November 2018 the following Council meeting dates for 2019.

January	No meeting
February	Tuesday 19 th
March	Tuesday 19 th
April	Tuesday 16 th
May	Tuesday 21 st
June	Tuesday 18 th
July	Tuesday 16 th
August	Tuesday 20 th
September	Tuesday 17 th
October	Tuesday 15 th
November	Tuesday 19 th
December	Tuesday 17 th

Meetings will commence at 6.30pm

Rob Madson
Chief Executive Officer

Lot 3 Austin Street
PO Box 44 Cue WA 6640
Ph 08 9963 8600
Fax 08 9963 1085
Email shire@cue.wa.gov.au

www.cue.wa.gov.au



2018 Christmas Decoration Competition Registration Form

Let's light up Cue!!!!
Make your house shine and glitter

1st Prize	\$400.00
2nd Prize	\$300.00
3rd Prize	\$200.00

There will also be an 'Encouragement' prize of \$100.00

**Please complete the form below and return to the
Shire of Cue Administration Office
by Monday 17th December, 2018.**

**Displays will be judged on the night of Tuesday 18 December
2018**

Name _____

Address _____

Phone No. _____



Proudly Supported by the Shire of Cue.



**The Annual Cue
Community Christmas Function
will be held on
Saturday 8 December 5.45pm
at the Shire Hall**



Meat, Salad, Bread & Cool Drinks Provided!

Entertainment provided by Cue Primary School

Santa Arrives at 7.00pm!

**We look forward to seeing you
there!**



Proudly Supported by the Shire of Cue

MURCHISON CALCUTTA CUP



They were off and racing last Thursday evening the 1st November when RDA Midwest Gascoyne in conjunction with the Cue CRC, and the Murchison Zone of WALGA Delegates hosted the inaugural Murchison Calcutta Cup at the Murchison Club Hotel Beer Garden.

With a crowd of appropriately 45-50 people who all joined in the fun of this creative networking event where a whopping \$700 was raised for the RFDS.

Alan Bradley DRD of RDA Midwest Gascoyne welcomed everyone to the sundowner and introduced new Chair Yvonne Messina and Board member, Jenny Allen, CEO of Ngala and Colin Bastow CEO, Shire of Wiluna.

The Murchison Cup was a recycled masterpiece fashioned by D-Trans in Geraldton, from an old gas bottle with a flourish of horse shoes for handles for good measure!

Special thanks go to Marie Ireland and Susan Bell from D-Trans in Geraldton for all their creative efforts.

It was polished to an inch of its life and proudly won by Vicki Blackmore with her horse "Bastow's Outback Boy".

Coming in in second place was Norm Trenfield with 'Sandstone Sensation', followed by Andrew W with "Barbie Girl"

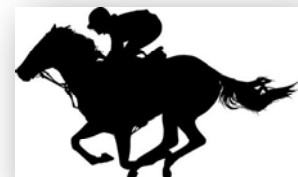
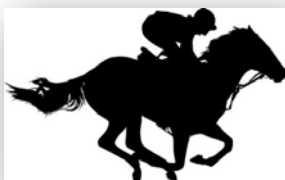
The horse race was a lot of fun and enjoyed by all and looks to be a possible event again with next year's November Local Government zone meeting, warmly referred to as 'Cue Parliament'.

RDA Midwest Gascoyne would like to say a very warm thank-you to Ruth and the team of the Cue CRC for all their great work & coordination with RSVP's, the wonderful Murchison Hotel a great venue to host a mock race and enjoy loads of delicious food and drinks!

Thank-you also must go to the Cue Shire for their support and the Murchison WALGA zone delegates for coming along and ensuring the success of this networking event.

Special thanks to the Shire of Yalgoo President, Joanne Kanny, CEO Silvio Brenzi and Yalgoo Works Forman Ray Pratt for coming to the rescue when Barbara Thompson RDA Midwest Gascoyne and RDA Board member and Ngala CEO Jenny Allen were stranded because the vehicle broke down!

Barb & Jenny still managed to arrive in Cue just in time to organise the running of the inaugural Murchison Calcutta Cup!



Holy grail: The 'bits and pieces' gold rush gripping WA's remote areas

The old timers in WA's Murchison Goldfields reckon prospecting is a lot like going fishing; only you never throw a catch away.

And the one big haul they are all talking about is a nugget worth an estimated \$110,000 pulled from the northern Goldfields above Kalgoorlie in September.

"I suppose that's the holy grail for any of us," prospector Peter Muir said, who's searching the ground around Cue, a gold mining town about six hundred kilometres north-east of Perth.

"You're always after that big fish. But the thing is you can't count on that."

The 3.23kg specimen contained 68 troy ounces or 2.11kg of gold and was dug up by a retired man who didn't want to be named.



But while these kinds of discoveries get plenty of attention, Mr Muir said the real game pulling thousands of people from far and wide to WA is a bit more slow and steady.

"We go out and find little bits. One or two grams, here and there a few bigger ones. But that all adds up. It's like a treasure hunt."

Striking it rich

The prospectors in Cue are a mixed bunch of curious amateurs, weathered veterans and happy-go-lucky chancers from all over WA and Australia. Some just have a swag and an old ute, while others have top of the line four wheel drives and caravans. But when it comes to searching for gold, they are all relatively equal, armed with maps, jewellers loupes, pick axes and metal detectors.



Cue is a quaint mining town in the Murchison Goldfields that hosts a big influx of prospectors every year.

"I've had the same metal detector for fifteen years," Jill Muir said, wife of Peter and a long-time gold prospector. "I could get a new one, but this one's got a lot of luck in it."

"A few years ago I detected a twelve ounce nugget (about 373 grams) from the ground, about four kilometres from Cue with this detector.

"We were out with some aunties and uncles and they sat down to have a cup of tea and a chat at the camp, and I just thought 'I can't just sit here for this' and so I went out with the detector.

"I was just a few metres away when I heard it – a big whoosh sound in the earphones. And then my uncle came over and he dug it out.

"I put it in my pocket and my pants nearly fell down it was so heavy. Slept with it under my pillow till we could offload it."

The Muirs sell most of their gold to the Perth Mint, with the twelve-ounce nugget Jill found fetching about \$19,000.

And though he wouldn't say how much they've earned prospecting over the years, Mr Muir said the "bits and pieces" they find are reward enough.

Land rich in history

Gold has been plucked from the ground around Cue since the early 1890s when the first prospectors arrived.

The most famous gold seeker is perhaps Herbert Hoover, the 31st President of the United States, who came to the region as a young man to assist at several mines including Big Bell, a gold rush settlement that's now a ghost town.



The landscape around Cue is starkly beautiful, with low scrub and red dirt flowing around shallow hills and rocky outcrops smoothed by thousands of years of wind and rain. The most dramatic of these is Walga Rock, an immense monolith five kilometres in circumference that seems to hum with a peculiar energy as you approach it, as though it's the focal point for the millions of years that have shaped the land. And in the lee of its rocky sides is a gallery of Aboriginal rock paintings, the largest of its type in WA, with images of animals, a tall ship, and the people who valued the land long before others came looting for gold.

Violet Muir is going strong at 92, still prospecting for gold.

Joining Peter Muir on the hunt for gold is his mother, Violet, who's still swinging her trusty metal detector at 92 years of age. She says prospecting can be meditative, and over the decades she's learned just to have a go and see what happens.

"Being out here just walking around, looking and listening, some days it's hard and you think 'oh why am I doing this?' But it's fun in the end. It's just a stunning country sometimes."

A Miner's Right

While it's never been as gold rich as the areas around Kalgoorlie, the Murchison Goldfields are a major centre for prospectors and there are a number of active mine sites in the area. This mix of paid professionals and entrepreneurial amateurs circling the same ground has produced a tolerant culture, as long as the rules are kept to. Some mine sites and leaseholders allow prospectors to come onto their land to look for gold provided they log their hours and report their findings.

But woe-betide the prospector who looks where they shouldn't, with fines of up to \$150,000 against individuals caught out of bounds.

"We check this as often as we can and get it updated as often as we can," Peter Muir says, looking at a "Tengraph" map as he sets up gear for another day's hunt.

Tengraph maps are produced by WA's Department of Mines to show "a current and accurate picture of land under mining activity," and Peter said he wouldn't prospect without one.

"We've been checked a few times by the gold squad, just to see what we're doing. Never had any trouble, but they're like the chaps from fisheries, you know? Ever on the look out."

Most prospectors are happy to swap yarns about how many grams they found that day or complain about a dry strike. But others are a lot more secretive, understandable given what's at stake.

'Oh, it's certainly competitive," said Bruce, a prospector from Perth who came back to the Goldfields after a three year battle with cancer.

"A few years back, I won't say who, but there was a fella who used to sit up on the lookout hill with a pair of binoculars and have a look at where everyone else was going. Not that that helped much."

Walga Rock is etched with some of the oldest Aboriginal Art

One evening as dusk settled a wild wind picked up over the land around Cue, flensing huge strips of red dust into the air. And while most prospectors busied themselves tying down the awnings of their caravans or putting in an extra tent peg or two, one veteran headed out on a quad bike, winking as he passed by.



"Always got to have a go. You never know, do you?"

Rock art paintings at Walga Rock.

David Allan-Petale is a writer and travel blogger exploring Australia with his family. You can follow their adventures at www.double-barrelledtravel.com.



The Council seeks nominations from the community members as to whom you believe should be selected for this honour.

If you know someone who has

Significant contribution to the Cue Community

Demonstrated leadership on a community issue resulting in the enhancement of community life

A significant initiative which has brought about positive change and added value to community life

Inspiring qualities as a role model for the community

Then please come into the Shire Office and pick up a nomination form.

The nominations will then be considered by the Council at the Ordinary Meeting held on 18 December 2018.

Accordingly nominations will close at 4:00pm, Friday 14th of December 2018.

Thank you

**Rob Madson
Chief Executive Officer**

Media Release

Vincent Catania MLA
Member for North West Central

MEDIA RELEASE

21 November 2018

Thank McGowan for "Frack All" in the Gascoyne and Midwest says Catania

This week's announcement by Mark McGowan that the Gascoyne, Midwest and Pilbara regions would be a "free for all" when it comes to the divisive issue of "fracking" has set community, business and environment groups on a collision course with the WA Labor Government.

The recently delivered report from the scientific review of fracking in WA recommended that the controversial method of exploiting onshore oil and gas reserves could be safely undertaken with proper regulation but has only been adopted in part by Mr McGowan.

Nationals WA Member for North West Central Vince Catania called it a sad day for the communities and agricultural businesses across the Gascoyne, Midwest and the Pilbara, who rely on clean, uncontaminated water supplies to help feed the nation and the world.

Mr Catania said "We have all been deserted by Mark McGowan and his WA Labor colleagues who can no-longer be trusted to look out for our regional communities."

"They were given false hope by Mr McGowan at the last election when he promised that he would protect them against the development of fracking."

"He is happy to protect the suburbs and people of Perth, the Peel and the SW regions because the risk of contamination and environmental damage is too great, but its open slather up here in the north."

"Just like everything else when it comes to the non-Labor regions of WA, it's out of sight, out of mind for Mark McGowan."

"Quite simply, he has lied to them again and they won't forgive him for this one", Mr Catania said.

Chairman of the Gascoyne Food Council, Michael Nixon, said "We are extremely disappointed and concerned that the State Government is going to allow fracking in regions where there is established horticulture and food production industries."

Calling for a ban on fracking where water is designated for human consumption or farming, Mr Nixon said "The only reasonable outcome is to ban fracking in any region where there is a recognised aquifer to ensure there is no chance of a detrimental effect on precious water sources."

Northwest@mp.wa.gov.au
www.vincencatania.com.au
FaceBook @VinceCataniaMP

20 Robinson Street Camarvon WA 6701
PO Box 1000 Camarvon WA 6701
Twitter @Vincent_Catania

Tel 9941 2999
Fax 9941 2000



THE NATIONALS *for Regional WA*

Media Release

Vincent Catania MLA
Member for North West Central

The Gascoyne River is the longest river in Western Australia at 865 kilometres long, with three tributaries and a catchment of over 76 thousand square kilometres. When the river is in flood any contamination would be impossible to contain.

Mr Nixon also questioned the scientific rationale for banning fracking in the South West but allowing it to occur in the North adding "Where is the science that recommends fracking in our region but bans it in the South West?"

"Due to the complex nature of our aquifers the risks and impacts of fracking in the North may be even higher", Mr Nixon said.

Ends.

For media enquiries please contact Vince Catania on 9941 2999 or email northwest@mp.wa.gov.au

[Northwest@mp.wa.gov.au](mailto:northwest@mp.wa.gov.au)
www.vincentcatania.com.au
FaceBook @VinceCataniaMP

20 Robinson Street Camarvon WA 6701
PO Box 1000 Camarvon WA 6701
Twitter @VincentCatania

Tel 9941 2999
Fax 9941 2000



THE NATIONALS *for Regional WA*



Dairy Wells Creek that fed water in to Lake Austin. Headwaters is north east of Livingstone St. Weds 14th.

Day Dawn Railway Dam that also fed water in to Lake Austin. Headwaters is Austin St. Fri 16th. The dam had overflowed.



Subject; Lake Austin following the rains on Remembrance Day 2018. Location of the photos is from Lakeside Causeway on Lakeside road.

Photographer acknowledgement: Geoff Barritt, Dairy Wells.



Cue was able to receive a bit of rain over the past couple weeks, flooding the streets of our historical town bringing life back into our gardens and lakes.

Photos supplied by John Hall and Udo Kaschner.

St Patrick's Catholic Church



Liturgies November and December

NB change of times

Sun 18 Nov	Celebration of the Eucharist (Mass)	08.00 am
Sun 25 Nov	Celebration of the Word with Communion	10.00 am
Sun 16 Dec	Celebration of the Word with Communion	10.00 am

Tues 25 Dec
Christmas Mass
09.00 am



All Welcome

St Patrick's is located on the corner of Marshall and Dowley Streets.

St Patrick's is under the pastoral care of the Sisters of the Good Samaritan of the Order of St Benedict.

Sr Gerri Boylan sgs 9963 4179

Capturing The Beauty In Our Town

- Cue WA



**PHOTOS SUPPLIED BY
JESSICA PEARCE**

If anyone has any photos of around our beautiful Murchison region along with a caption please send them to the CRC email address at cue@crc.net.au and we will be happy to include them in our Monthly Dryblower.



Government of Western Australia
WA Country Health Service

WA's Country Ambulance Strategy: Have your say today

**The draft WA Country Ambulance Strategy is out now.
Have your say until Monday 10 December, 2018.**

The draft Strategy outlines a plan and actions to help support and improve the ambulance service to meet the needs of communities into the future.

Now we want to hear from you. Take the survey to have your say – it'll take less than 10 minutes to complete on your phone, laptop or desktop.

Visit <https://wacountryambulance.com.au/> or search in your internet browser WA country ambulance to read the draft Strategy and take the survey, or write to us:

The Country Ambulance Strategy

WA Country Health Service

PO Box 6680

East Perth Business Centre

Western Australia 6892

Get in touch

WA Country Health Service

www.wacountry.health.wa.gov.au



Image © St John Ambulance WA used with permission



Have you had your say on the draft WA Country Ambulance Strategy? It makes 19 recommendations aimed at supporting WA's country ambulance services into the future. Find out more and provide your feedback by 10 December here:

<https://wacountryambulance.com.au>



Department of
Transport

DoT Remote Services will be visiting Cue



When: 2nd January 2018 1PM - 3PM

Where: Cue Community Resource Centre - Old Post Office

We will be able to help you with the following services:

- theory test
- photo card applications
- driver's licence applications
- change of address
- registration and driver's licence renewals
- vehicle transfers
- return of vehicle plates
- driving assessments

To enable us to help you, please ensure you bring your birth certificate, Medicare card, bank card and two types of proof of residency, along with cash or card for payment.

For enquiries please call: Karen 9216 8194

Sometimes quicker is better with **DoT Direct**

Whether you're renewing your licence, transferring vehicle ownership or checking your demerit points, **DoT Direct** is quick and easy to use wherever you are.

Start saving time by visiting www.transport.wa.gov.au/dotdirect



Keep up to date with upcoming remote services visits and stories, follow us on Facebook **Department of Transport Regional Services WA** or search **@RegionalServicesWA**



OPEN

The Cue CRC book exchange.
Come in and browse the range,
Swap a book or purchase one
by donation

BOOK EXCHANGE

Where: the Cue CRC 72 Austin Street Cue
Any time while open
Opening hours: 8.30-3.30

Monday to Friday



ATTENTION

The Library will be closed
on the following dates

19th Dec - 2nd Jan

Reopens on the
3rd of January.

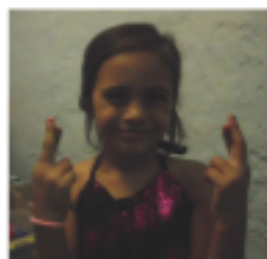
Please call the Shire office
on **99638600** for more
information



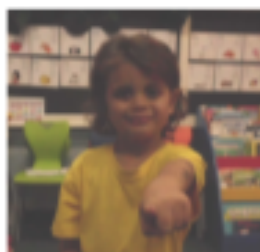
This is the last AUSLAN addition from Cue Primary School for 2018 .

What better way for us to close off then for you to learn the signs for "We Wish You A Merry Christmas."

We wish



you a



Merry



Christmas.

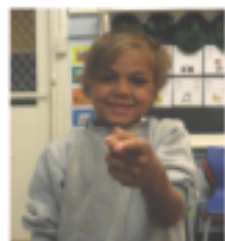


Merry

We wish

Christmas.

you a

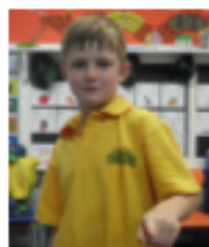
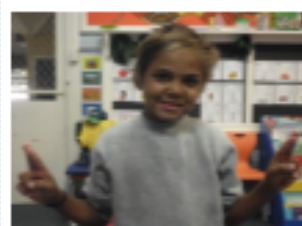


Merry

We wish

Christmas,

you a



happy

New

and a
Year.



Have a happy and safe holiday.

From the students and staff at Cue PS



Cue Primary School would like to thank Cue community for the wonderful support they received throughout the year.

We work closely with businesses and community agencies to provide the best outcomes for our students.

Shire of Cue

The Shire has generously supported the school this year with:

Support of time and talents from the Coordinator Community Development, Janelle

Allowing our students to participate in stories and activities led by Cue Librarian, Steph.

Use of the Shire Bus to enable our students to participate in interschool sporting events and local outings.

Cue Community Resource Centre

Offering programs, goods and support to the school.

A big thank you goes to the CRC staff and committee for their support.

Nursing Post

Ongoing support of the staff and students over the last year.

Thank you to all at the Nursing Post

Cue Senior Citizens

Donated funds to support our school camp and the Cuerosity Op Shop

Help fund an op shop visit by the students teaching them money skills and the value of money.

Thank you for your ongoing support of our school

Cue Police

Visits to the school which sometimes includes being part of our assemblies

Supporting special events such as Naidoc Week and the athletics carnival.

Judging our creative craft competition which included a variety of robots

Giving advice to the school in a friendly and helpful manner

School Council, Finance Committee and Volunteers

Last but not least, thanks you to our School Council, Finance Committee and the volunteers who support the school's administration, events, activities and fundraising.





REMEMBRANCE DAY 2018



What a wonderful attendance for our Remembrance Day Service. All morning we had torrential rain and it looked like the service was going to be held under the front veranda of the Shire office. Then it happened, at 10.45am the skies cleared and the sun shone. The rain held off for the entire service which was very much welcomed. The lovely service was conducted by Cue Primary School Principal, Cathy Jones. Thank you to the children from Cue Primary School for the very creative wreath that was laid.





Lest We Forget



ITS TIME.

The time has come to say good-bye after ten great years in Cue,
Kath and I have enjoyed our time detecting most days it is true,
But nothing compares to the friendships we have made in this
delightful little town, it saddens us no end to leave you all,
and with that we do not jest,
But as we are getting on a bit ,we think that it is best,
The fact that all our family is 5000 kays away,
it is a long drive to get there you cannot do it in a day.
So its farewell for now and we are sad to go, as we wont be back in May.
Thank you all for the care and attention we have enjoyed during our stay,
we wish you all health and happiness and we will miss CUE every day

Brian Notting.



Expressions of interest for: COMMUNITY BOWLS

Contact: shire@cue.wa.gov.au

(Please provide feedback about start time)

6:30pm weekdays proposed start time

4 players to a team

Each game is around 1 hour

Friday night wrap up





Logo Competition 2019

Calling all talented and inspired artists in Cue—we need you!!

QFest is looking to update its logo for the event and we are seeking your ideas and designs to create a new look.

There is a \$100 prize for the winning entry.

Above is the original design—and there are some guidelines around what the new logo should look like—

- The logo should use the colours of the Murchison—gold, red, ochre, orange, yellow and similar
- It has the name QFest in it
- It has 'Celebrating Diversity' incorporated into it somewhere
- No offensive images or wording

Entries can be sent to Janet Wicks at info@qfest.com.au or you can drop in a paper design at the Shire office by December 21st 2018.

Winning entry will be selected by the QFest committee by January 10th 2019.

CUE HEALTH CENTRE

Victoria Street
Cue WA 6640
Tel: 9963 0100



Murchison Dental

December 2018		For appointments PH: 0427386647
R.F.D.S GP Clinic	11th Dec	Meekatharra
Podiatrist	-	Mt Magnet
Physiotherapist	10th Dec	For appointment 0427386647
ICDC Child Health	-	Please enquire as above dates are subject to change
Grams	5th Dec	
FLU VAC Have STARTED		

**AMBULANCE
POLICE
FIRE BRIGADE**

PHONE: 000

FOR AFTER HOURS NURSE

PHONE: 99630100

DO NOT

VISIT THE NURSE , FIRIES or POLICE AT HOME

**REMEMBER
ALL EMERGENCIES
RING 000**

RECYCLERECYCLERECYCLE

The Cue CRC is your local place to RECYCLE your ink cartridges

Just bring them in and put them in the recycling box, we then send the full bag to Planet Ark for processing.

We have been doing this small bit for the environment for over 7 years, and will continue for as long as we can.

If you have any other recycling ideas please come and tell us.

We are located in the Old Post Office building, 72 Austin Street Cue.

BRING IN YOUR INK CARTRIDGES



I wish you joy all though
your holidays,
I wish you good luck that
forever stays.
I wish you the love of
family and friends,
I wish you happy days
that never ever ends.
Merry Christmas to you!

SUDOKU!

5	3			7				
6			1	9	5			
	9	8					6	
8				6				3
4			8		3			1
7				2				6
	6					2	8	
			4	1	9			5
				8			7	9



5				1				4
2	7	4				6		
	8		9		4			
8	1		4	6		3		2
		2		3		1		
7		6		9	1		5	8
			5		3		1	
		5				9	2	7
1				2				3

6				3				5
9		3		8				
	5	1				6		
			4	3				7
		8	5		7	1		
4				6	8			
		7				9	8	
				7		4		2
8			3					6

CUE PRIMARY SCHOOL

End of Year Awards Night

Cue Primary School

invites

Cue Community

To come to school

on

Wednesday 12th December 2018

Starting at 6pm

finger food provided.

Has started

AIR CONDITIONING SERVICES

REFRIGERATION

Installation
Repairs / re gassing
Sanitizing and cleaning

Ph 0420 103 414

SPLIT SYSTEM SALES



decanfrost@westnet.com.au

P.O. Box 183, Mount Magnet

Mount Magnet Cue Yalgoo Meekatharra Sandstone

ARC
Lic # L015254
Lic # AU7850

Geraldton Greenough

FINANCIAL SERVICES

Servicing throughout the Mid West

- Financial Planning
- Superannuation Advice
- Estate Planning
- Insurance and Risk Management
- Pre and Post Retirement Planning
- Aged Care & Centrelink
- General Insurance – Specialising in Business & Farm Insurance, including Crop Insurance

Contact us for obligation free quotes:

www.ggfs.com.au

9964 2522

enquiries@ggfs.com.au

Beachcroft Holding Pty Ltd T/As Geraldton Greenough Financial Services (AFSL: 250 286) are Authorised Representatives of Dover Financial Services Pty Ltd (AFSL: 307 248)



Ray Irvine 28.12.

Katrina Reece 13.12.

MT MAGNET MEATS



**The only FRESH
PRODUCE BUTCHER
in the Mid West**

**Phone or Fax your
orders for quicker
pick up
Bulk meat specialist
Quality meat at Perth
prices**

**76 Hepburn St
(Main Street)**

**Phone / Fax
9963 4195**

*Pleased to meet you
with Meat to please you.*

**Mon—Friday
9—5 pm**

**Saturday
9—12 pm**



FOR SALE

FOR SALE

\$125,000

OFFICE

Elders Perth
Phone: 9422 2444

AGENT

Greg Smith
0428 486 806

Email:
greg.smith@elders.com.au



23 (Lot 609) Dowley Street CUE

Modern Living in Historic Gold Town

- Spacious and reasonably modern 4 x 2 in a quiet location of this historic township.
- Opportunities to acquire homes of this quality in Cue are not common and the cost of establishing new is quite high.
- Open plan living dining, 4 good sized bedrooms with full ensuite in master.
- Other features include ducted airconditioning, car port, large rear patio, rainwater tanks and garden shed.

Web ID: 19440950



FOR SALE.



Items for sale:

- 1x small pantry cupboard with slide out shelving and draws.
- 2x Bar fridges
- 1x office desk with detachable hutch and draws.



For more inquiries please
contact the CRC on
08 99631198.

Make an offer, we do have a
reserve.



JUST FOR KIDS

Which animal makes the best pet?

A cat... because it is purr-fect.



What is black and white and red all over?



A sunburnt zebra.

What is black and white, black and white, black and white?

A penguin rolling down a hill.



What goes tick tick, bow wow, tick tick, bow wow?



A watch dog.

What time is it when a lion walks into a room?

Time to leave.



*Where do cows go on the weekend?
To the moo-vies.*

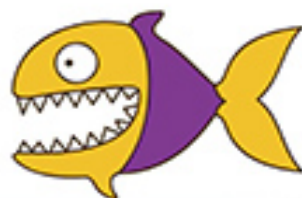
What time is it when an elephant sits on your bed?

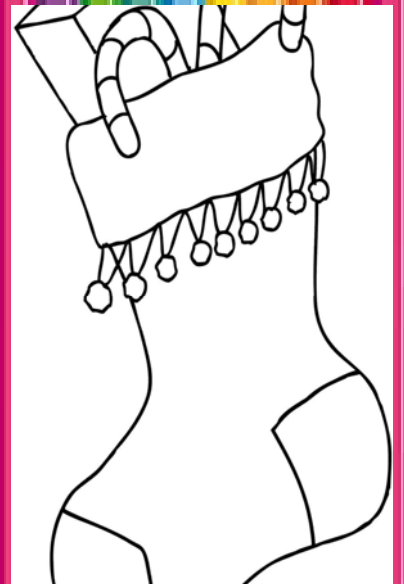


Time to get a new bed.

Why are fish so smart?

Because they live in schools.





CLASS RULES

1

Listen carefully

2

Keep your hands and feet to yourself

3

Follow directions

4

Raise your hand if you have something to say

5

Show respect and kindness to your classmates

6

Do your best

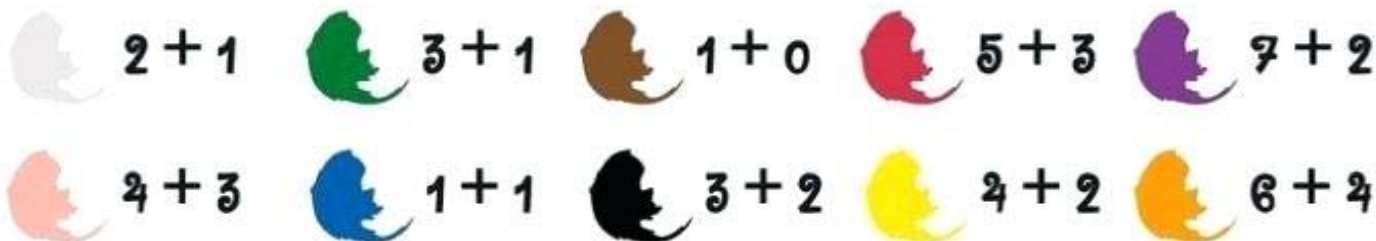
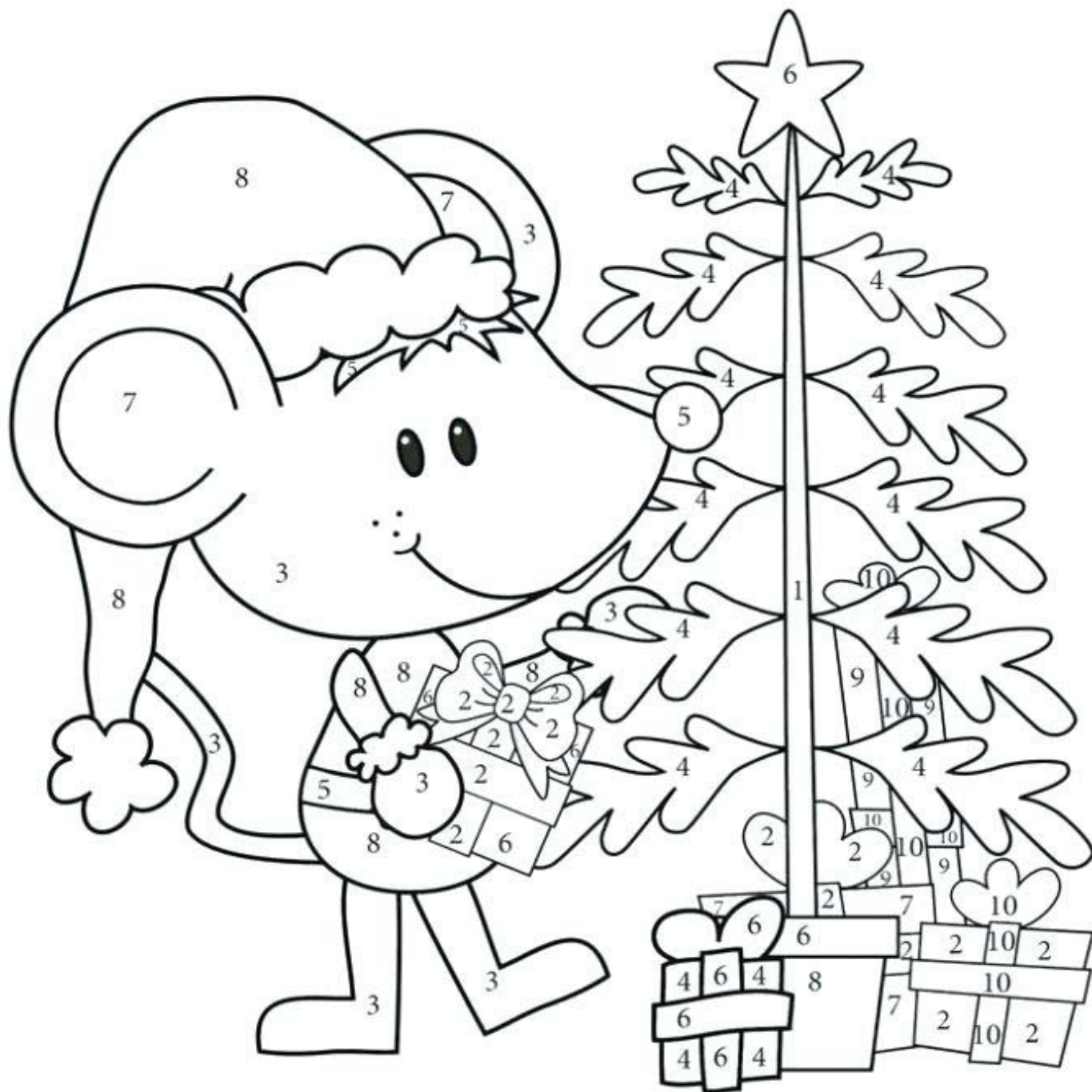
MAKE YOUR OWN CHRISTMAS CARD



ASK AN ADULT BEFORE USING SCISSORS

OTHER SIDE OF YOUR CHRISTMAS CARD

Name:



DECEMBER

SUNDAY	MONDAY	TUESDAY	WEDNESDAY	THURSDAY	FRIDAY	SATURDAY
						1
2	3 DOT Coming to Cue.	4	5	6	7	8 Town Christmas Party
9	10	11	12	13	14 End of Term 4	15
16	17 Council meeting	18	19	20	21	22
23	24 Christmas Eve	25 Christmas 	26 Boxing Day	27	28	29
30	31 New Years Eve					

JANUARY 2019

		1 New Years Day	2 DOT Coming to Cue.	3 Circuit	4	5
6	7					